

JUMO flowTRANS DP R01/R02 – Flow Measurement with Orifice Plate (409602)

- Forms a measuring system along with JUMO dTRANS p02/p20 Delta
- Directly applicable in many liquids, gases, and steam
- Pipe diameter from DN 10 (3/8") to DN 1000 (40")
- Medium temperatures from -200 to +1000 °C
- Pressures up to 420 bar
- Many materials available



Order details

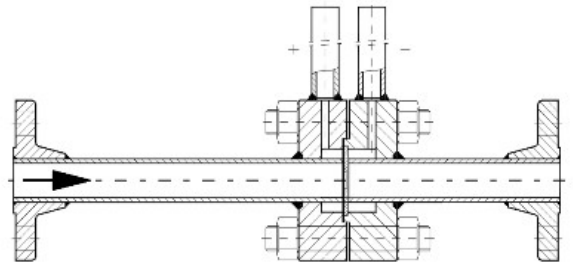
Prices upon request

Meter run R01 (up to DN 40)

The meter run R01 with the orifice plate (carrier rings with measuring insert) is a primary element with ring chamber

The measuring insert is designed as a standard orifice plate DIN EN ISO 5167-2 and according to the respective operating conditions. Other forms of orifice plates are available upon request.

The meter runs are delivered completely assembled and installation.



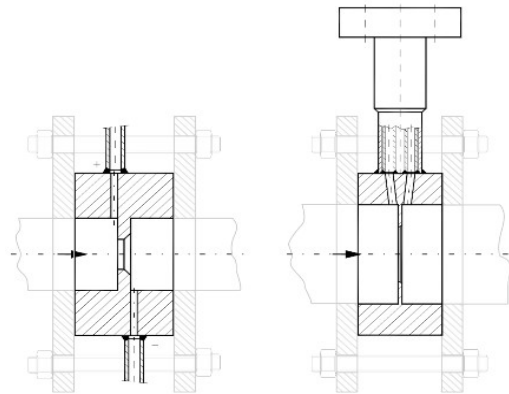
exchangeable taps.
according to conditions.
ready for

Orifice plate R02 (as of DN 50)

The single-part orifice plate (carrier rings with integrated measuring insert) is a primary element with single bore pressure taps in a compact or remote design type.

The measuring insert cannot be exchanged. It is designed as a standard orifice plate according to DIN EN ISO 5167-2 and according to the respective operating conditions. Other forms of orifice plate types are available upon request.

The orifice plate is mounted between the standardized flanges of the pipe.



Remote mount design type

Compact design type