

JUMO variTRON Visu-Template - Installation CODESYS configuration file

JUMO Engineering

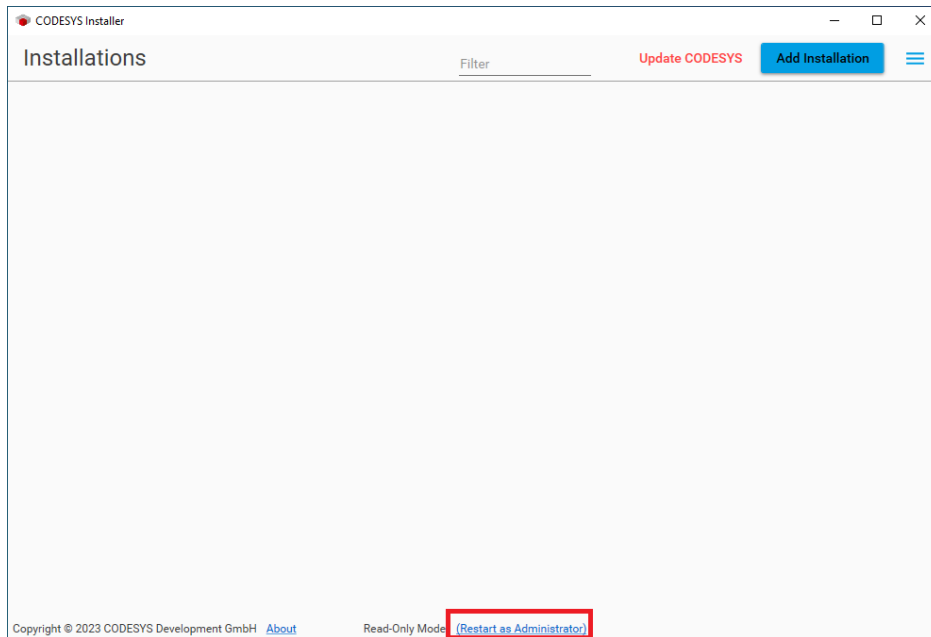
Created on 04/08/2024

This guide shows us step by step how to add a new installation in the **CODESYS Installer**. An internet connection is required for this process.

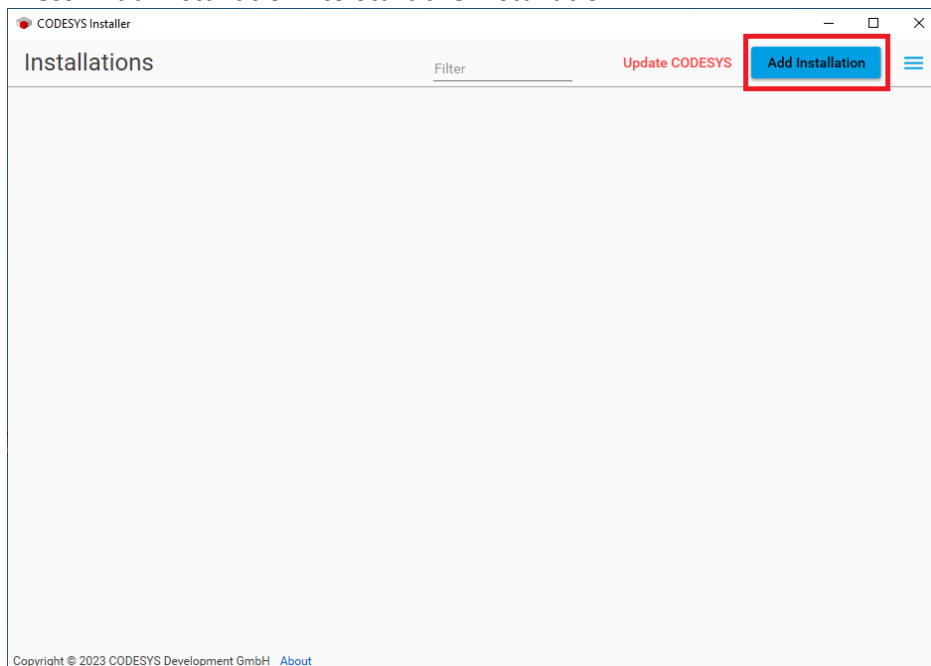
The first step is to download and install the **CODESYS Installer** from the CODESYS homepage.

Once the CODESYS Installer has been installed and started, administrative authorizations are required for the next steps.

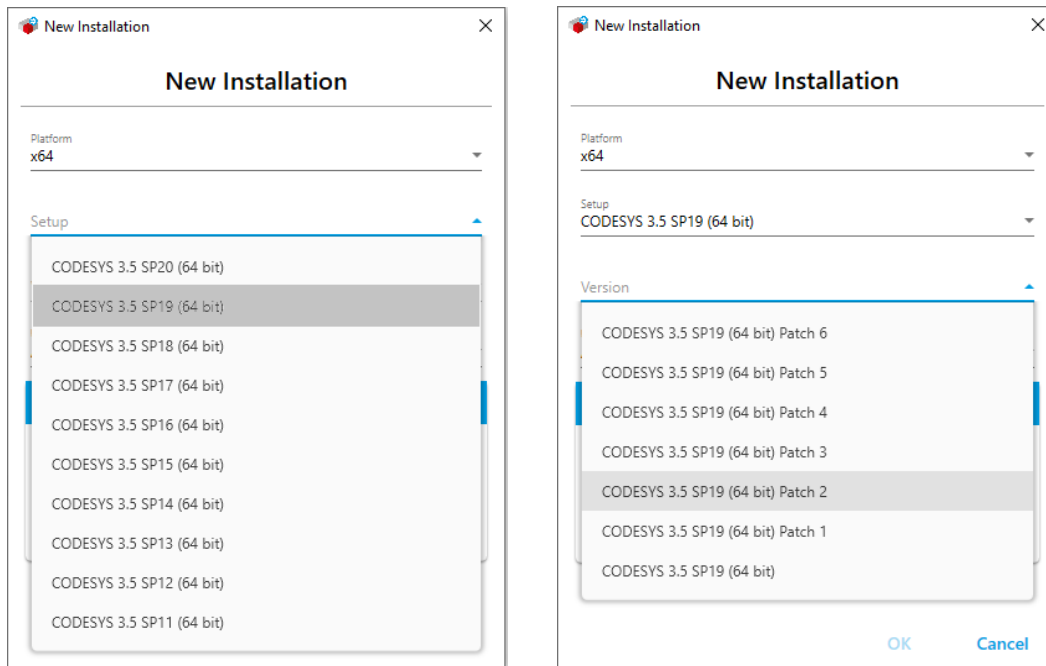
A 'Restart as Administrator' can be run in the footer of the CODESYS Installer (if necessary).



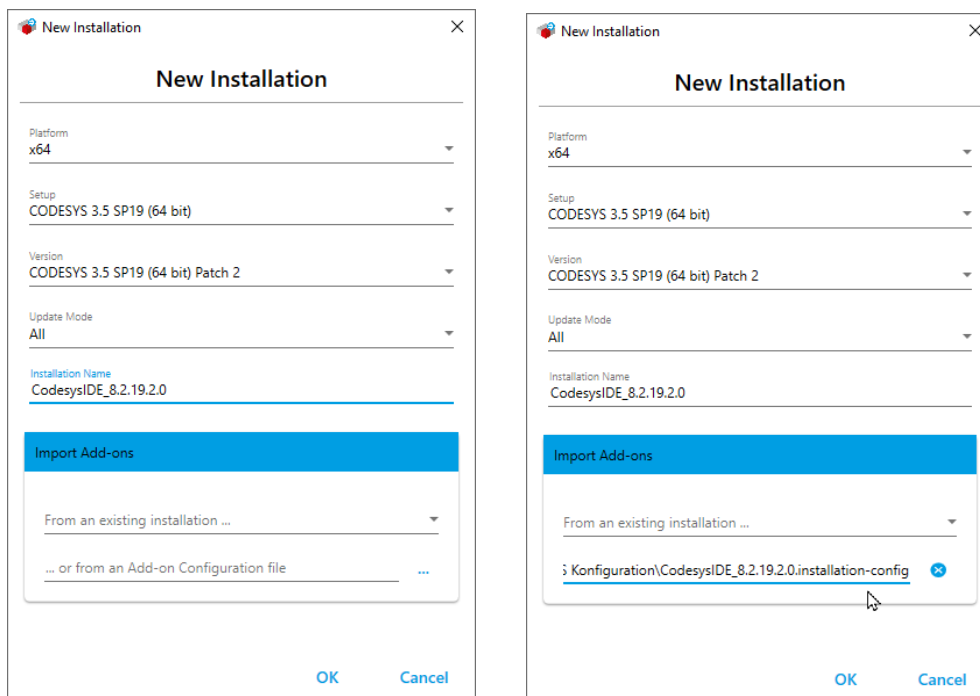
Press "Add Installation" to start the installation.



The desired CODESYS version (service pack and patch) is now entered step by step. In our case, this is CODESYS 3.5 SP19 Patch 2.

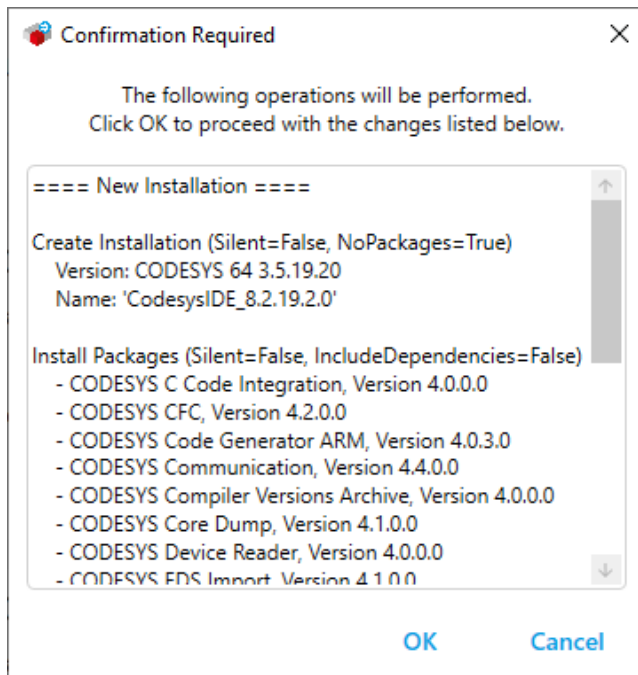


Then enter the installation name (CodesysIDE_8.2.19.2.0) and select the supplied configuration file (CodesysIDE_8.2.19.2.0.installation-config) ...

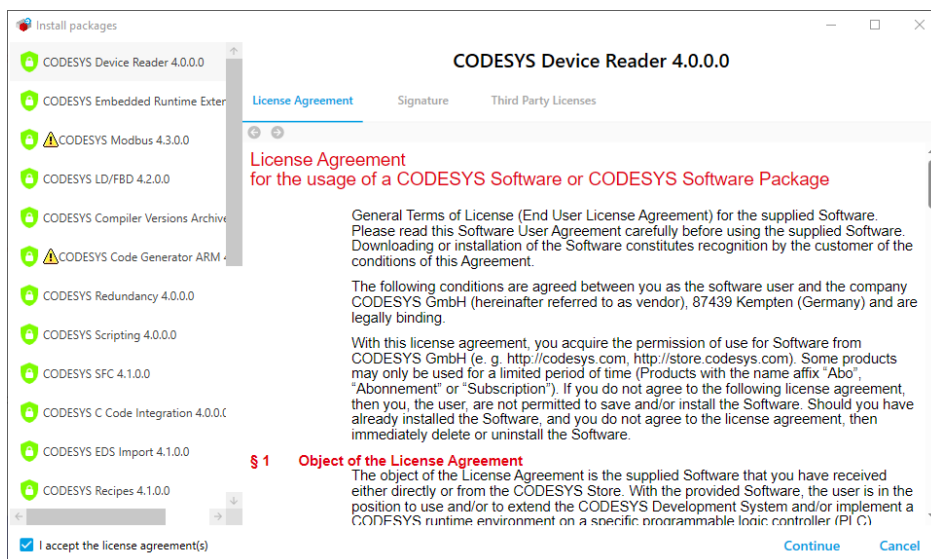


...and press 'OK' to continue.

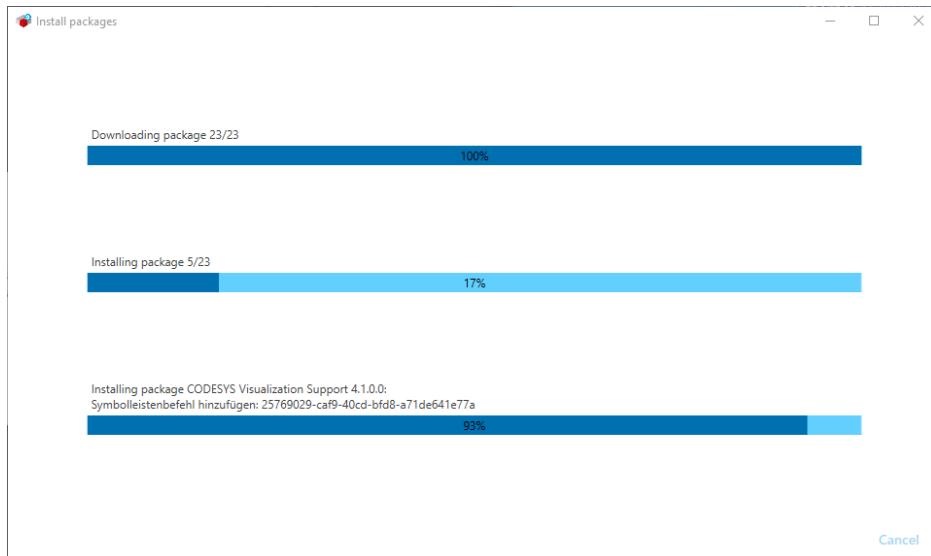
Once the installation information has been entered and accepted, an overview of the CODESYS software and its add-ons is displayed, which are then installed. This dialog must be confirmed with 'OK'.



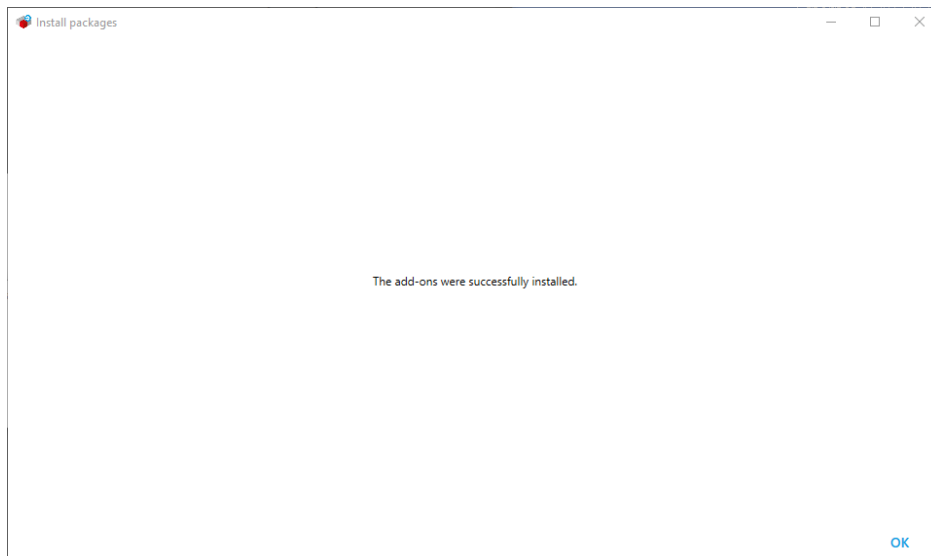
The following license agreements must be confirmed using the checkbox so that the installation can continue. To continue, click on the 'Continue' command at the bottom of the window.



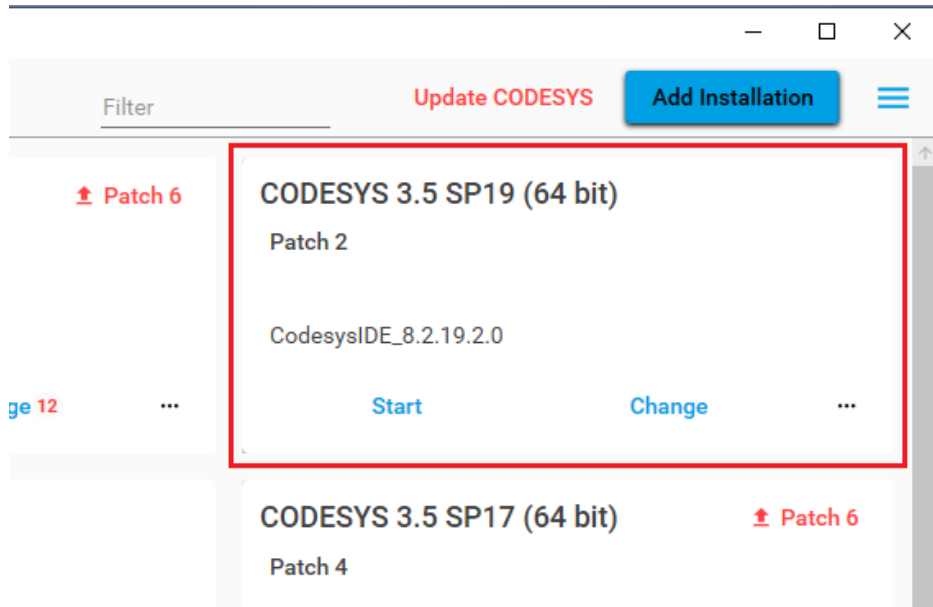
The installation of a new CODESYS installation can take a few minutes. The progress can be monitored using the progress bar.



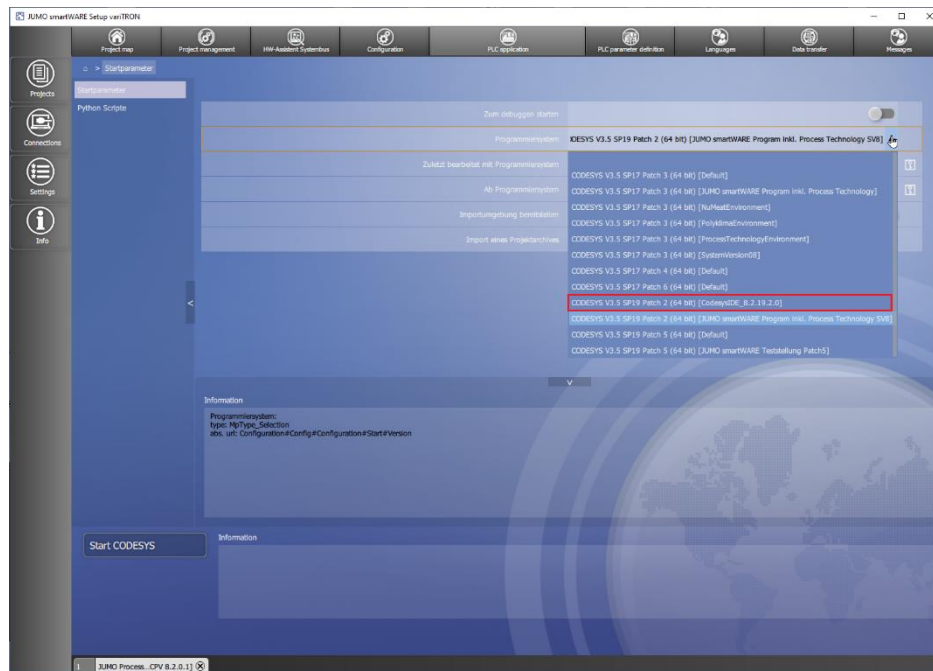
The completion of the new CODESYS installation is confirmed in a message box and must be closed with OK.



After a successful installation, a corresponding tile is displayed in the CODESYS Installer.



The new installation can now be selected in the JUMO smartWARE Setup.



Once the new CODESYS installation has been selected, CODESYS can be started. Administrative rights are required for the first start, as JUMO-specific packages still have to be installed by the setup.

