

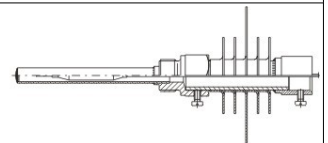
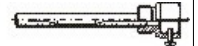
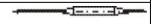
## Surface-Mounted Thermostats, ATH.-SE Series (603031)

- Liquid expansion
- Microswitch
- Tests/inspections: Det Norske Veritas, Germanischer Lloyd, Bureau Veritas



### Order details

<b>(1) Basic type</b>	
603031	Surface-mounting thermostat, ATH.-SE
<b>(2) Basic type extension</b>	
02	ATH.-SE-2 temperature monitor TW
20	ATH.-SE-20 safety temperature monitor STW
70	ATH.-SE-70 safety temperature limiter STB
<b>(3) Design type</b>	
1	With rigid thermowell
2	With capillary
<b>(4) Control range 1</b>	
025	0 to 100 °C
041	20 to 90 °C
042	20...120 °C
043	20...150 °C
052	30 to 110 °C
062	50...200 °C
063	50...250 °C
064	50...300 °C
067	60...140 °C
<b>(5) Switching differential</b>	
00	Without switching differential
15	1,5 %
30	3 %
60	6 %
<b>(6) Capillary length</b>	
0	Without capillary
1000	1000 mm
2000	2000 mm
<b>(7) Material of capillary</b>	
00	Without capillary
20	CrNi (stainless steel)
40	Cu (copper)
<b>(8) Process connection</b>	
10	Plain cylindrical probe
20	Screw-in thermowell
30	Screw-in pocket with cooling fins
<b>(9) Thread</b>	
00	Without thread
13	G 1/2
<b>(10) Process connection material</b>	
00	Without process connection
20	CrNi (stainless steel)
46	CuZn (brass)



<b>(11) Fitting length</b>	
000	ATHf-SE without pocket
100	100 mm
120	120 mm
150	150 mm
200	200 mm
<b>(12) Immersion tube diameter</b>	
00	Without thermowell
08	8 mm
10	10 mm
<b>(13) Probe diameter</b>	
6	6 mm
8	8 mm
<b>(14) Extra codes</b>	
000	Without extra code
574	Microswitch with opening contact, restart lock and additional signal contact (only for STB)

**Order code**

(1) (2) (3) (4) (5) (6) (7) (8) (9) (10) (11) (12) (13) (14)  
 /  -  -  -  -  -  -  -  -  -  -  -  -  /


**DGRL**


Accessories see price sheet:

- Process Connections for Thermostats (606710)