

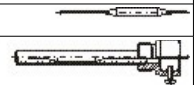
## Panel-Mounted Thermostat, EM Series (602026)

- Liquid expansion
- Microswitch
- Self-monitoring
- Safety switch-off



### Order details

<b>(1) Basic type</b>	
602026	Panel-mounting thermostat, model EM (STW/STB)
<b>(2) Basic type extension</b>	
20	EM-20-E safety temperature monitor STW, limit value adjustable
30	EM-30-E safety temperature monitor (STW), fixed limit value
80	EM-80 safety temperature limiter STB
<b>(3) Control range 1</b>	
000	Fixed limit value
055	40...110 °C
096	350...500 °C
097	500..650°C
508	110...170 °C
552	150..250 °C
575	180...250 °C
606	230...300 °C
643	450..600°C
<b>(4) Limit value STW/STB</b>	
000	With adjustable control / limit value
110	110 °C
95	95 °C
<b>(5) Capillary length</b>	
1000	1000 mm
2000	2000 mm
3000	3000 mm
4000	4000 mm
5000	5000 mm
<b>(6) Material of capillary</b>	
20	CrNi (stainless steel)
40	Cu (copper)
<b>(7) Process connection</b>	
10	Plain cylindrical probe
20	Screw-in thermowell
<b>(8) Thread</b>	
00	Without thread
13	G 1/2
<b>(9) Process connection material</b>	
00	Without process connection
20	CrNi (stainless steel)
46	CuZn (brass)
<b>(10) Fitting length</b>	
000	Without pocket
100	100 mm
120	120 mm
150	150 mm
200	200 mm
300	300 mm
<b>(11) Immersion tube diameter</b>	
00	Without thermowell
8	8 mm
<b>(12) Probe diameter</b>	



6	6 mm
<b>(13) Extra codes</b>	
000	ohne Typenzusatz
025	Befestigungsbrücke aus Metall
707	Temperature compensation
574	Microswitch with opening contact, restart lock and additional signal contact (only for STB)
702	Snap action contact with gold-plating
699	Screw connection up to 2.5 mm <sup>2</sup>
704	Mounting of housing with 2 screws M4, spacing 28 mm
705	Mounting of housing with 2 screws M3, spacing 33 mm
706	Mounting of housing with 2 screws M3, spacing 22 mm
710	Central mounting M10x1 with cap nut

**Order code**

(1) (2) (3) (4) (5) (6) (7) (8) (9) (10) (11) (12) (13)  
 /  -  -  -  -  -  -  -  -  -  -  -  /


**DGRL**

**Stock versions**

Order code	Limit value STW/STB	Probe diameter	Part no.
602026/80-000-95-1000-40-10-00-00-000-00-6/710,	95 °C	6 mm	60000753
602026/80-000-110-1000-40-10-00-00-000-00-6/710,	110 °C	6 mm	60000775

Accessories see price sheet:

- Process Connections for Thermostats (606710)