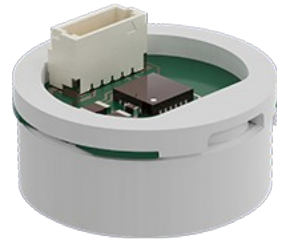


JUMO flowTRANS US W02 – Ultrasonic Flowmeter (405106)

- High degree of process reliability due to precise measurement
- Flexible use in different processes
- Cost reduction by simultaneous measurement of up to 3 measurands (flow, temperature, and pressure)
- Reduced maintenance costs due to wear-free structure without moving parts
- Time and cost savings during configuration and integration in plants and sensor networks through IO-Link



Order details

(1) Basic type	
405106	JUMO CEROS C02 M
(2) Basic type extension	
000	None
(3) Input	
455	0 to 1.6 bar relative pressure
456	0 to 2.5 bar relative pressure
457	0 to 4 bar relative pressure
449	-1 to 1 bar relative pressure
481	-1 to 3 bar relative pressure
545	-1.6 bar relative pressure
472	-1 to 10 bar relative pressure
434	-1 to 16 bar relative pressure
514	-1 to 25 bar relative pressure
546	-1 to 40 bar relative pressure
547	-1 to 60 bar relative pressure
(4) Measuring cell	
231	Sensor element ceramic
232	Sensor element ceramic with process connection and FPM seal
(5) Process connection	
000	Without process connection
502	G 1/4 DIN EN 837
504	G 1/2 DIN EN 837
511	1/4-18NPT DIN EN 837
521	G 1/4 DIN 3852-11
(6) Output	
523	I ² C, 4-wire, 3.3 V supply
(7) Electrical connection	
39	JST connector
42	Edge connector
(8) Extra codes	
000	Without extra code
983	Test report

Order code

(1) (2) (3) (4) (5) (6) (7) (8)

--	--	--	--	--	--	--	--

Accessories

Description	Part no.
PC-Interface+Converter USB/I ² C 3,3V JST	00772261

Software

Description	Part no.
Setup JUMO CEROS Series 02	00759752

