

# Rotary type sight glass

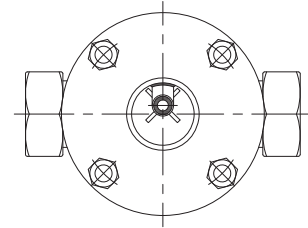
## Model : S500 series

Spec. sheet no. SD05-01

### Description

Rotary type sight glass allows visual monitoring of the internal fluid flow state as the fluid flows, causing the rotor to rotate.

### Model : S500



### Connections

Screwed end  
Socket end

### Max. pressure

2.9 MPa

### Max. temperature

300 °C

### Glass

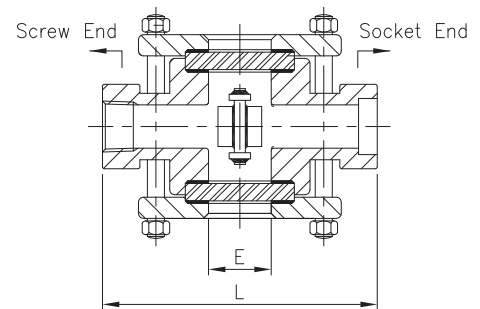
Tempered

### Body material

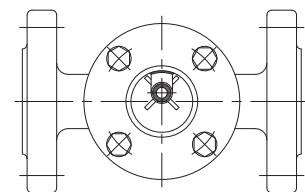
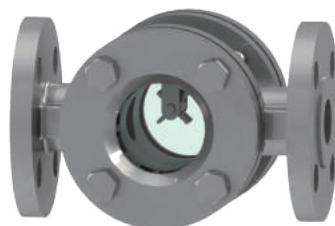
A216 WCB  
A351 CF8  
A351 CF8M

### Dimension

Size A(")	L	E
8 (1/4)	120	50
10 (3/8)	120	50
15 (1/2)	120	50
20 (3/4)	120	50
25 (1)	140	50



### Model : S510



### Connections

Flanged end

### Max. pressure

2.9 MPa

### Max. temperature

300 °C

### Glass

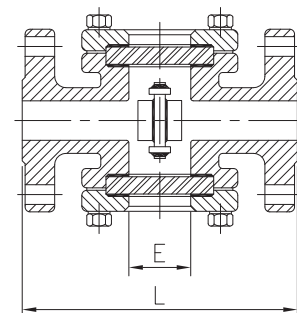
Tempered

### Body material

A216 WCB  
A351 CF8  
A351 CF8M  
A106 Gr.B

### Dimension

Size A(")	L	E
15 (1/2)	160	40
20 (3/4)	160	40
25 (1)	170	50
32 (1 1/4)	200	65
40 (1 1/2)	200	65
50 (2)	220	75
65 (2 1/2)	270	105
80 (3)	270	105
100 (4)	320	130
125 (5)	380	170
150 (6)	420	200



**1. Base model**

- S200** Rotary type (Screwed)  
**S210** Flapper type (Flanged)

**2. Line size**

- |            |       |            |      |
|------------|-------|------------|------|
| <b>A01</b> | ½"    | <b>J01</b> | 15A  |
| <b>A02</b> | ¾"    | <b>J02</b> | 20A  |
| <b>A03</b> | 1"    | <b>J03</b> | 25A  |
| <b>A04</b> | 1½"   | <b>J04</b> | 40A  |
| <b>A05</b> | 2"    | <b>J05</b> | 50A  |
| <b>A06</b> | 2½"   | <b>J06</b> | 65A  |
| <b>A07</b> | 3"    | <b>J07</b> | 80A  |
| <b>A08</b> | 4"    | <b>J08</b> | 100A |
| <b>A09</b> | 6"    | <b>J09</b> | 150A |
| <b>ZZZ</b> | Other |            |      |

**3. Connection**

- |            |          |            |        |
|------------|----------|------------|--------|
| <b>A01</b> | 150Lb RF | <b>J01</b> | 10K RF |
| <b>A02</b> | 300Lb RF | <b>J03</b> | 20K RF |
| <b>A11</b> | 150Lb FF | <b>J11</b> | 10K FF |
| <b>A12</b> | 300Lb FF | <b>J13</b> | 20K FF |
| <b>B01</b> | NPT(F)   |            |        |
| <b>B02</b> | PT(F)    |            |        |
| <b>B03</b> | SW       |            |        |
| <b>ZZZ</b> | Other    |            |        |

**4. Body / Cover material**

- C** Body - A216 WCB / Cover - C.S  
**4** Body - A351 CF8 / Cover - 304SS  
**6** Body - A351 CF8M / Cover - 304SS  
**L** Body - A351 CF3M / Cover - 304SS  
**O** Other

**5. Glass material**

- T** Tempered  
**O** Other

**6. Gasket material**

- T** Non-Asbestos and Teflon  
**G** Non-Asbestos and Graphite  
**O** Other

**7. Rotor material**

- 6** 316L SS  
**O** Other

**Sample ordering code**

1	2	3	4	5	6	7
S500	A01	A01	C	T	T	6



© WISE Control Inc. All rights reserved. ALL PRODUCT, PRODUCT SPECIFICATIONS AND DATA ARE SUBJECT TO CHANGE WITHOUT NOTICE TO IMPROVE RELIABILITY, FUNCTION OR DESIGN OR OTHERWISE.