

Ball type sight glass

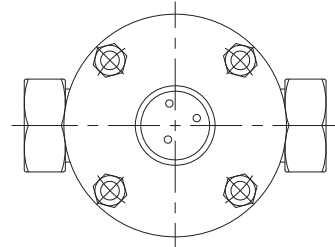
Model : S300 series

Spec. sheet no. SD03-01

Description

Sight glass with balls can check the fluid flow by observing motion of balls.

Model : S300



Connections

Screwed end
Socket end

Max. pressure

2.9 MPa

Max. temperature

100 °C

Glass

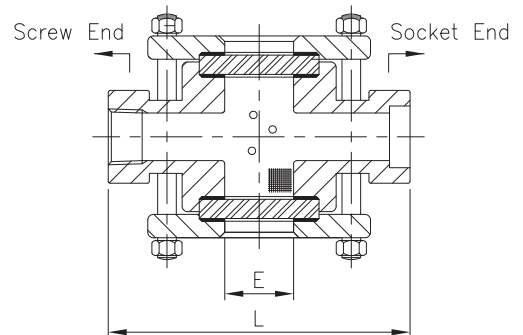
Tempered

Body material

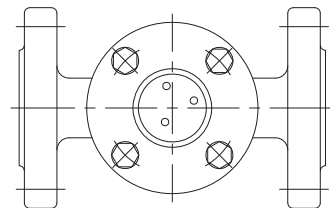
A216 WCB
A351 CF8
A351 CF8M

Dimension

Size A(")	L	E
8 (¼)	120	50
10 (¾)	120	50
15 (½)	120	50
20 (¾)	120	50
25 (1)	140	50



Model : S310



Connections

Flanged end

Max. pressure

2.9 MPa

Max. temperature

100 °C

Glass

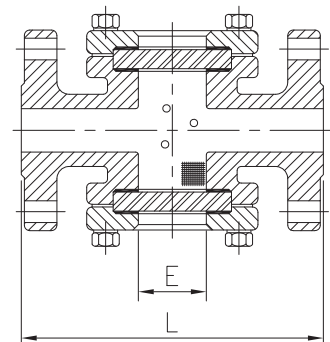
Tempered

Body material

A216 WCB
A351 CF8
A351 CF8M
A106 Gr.B

Dimension

Size A(")	L	E
15 (½)	155	40
20 (¾)	155	40
25 (1)	170	50
32 (1¼)	200	65
40 (1½)	200	65
50 (2)	220	75
65 (2½)	270	105
80 (3)	270	105
100 (4)	320	130
125 (5)	380	170
150 (6)	420	200



1. Base model

- S300** Ball type (Screwed) sight glass
S310 Ball type (Flanged) sight glass

2. Line size

JIS	mm	ANSI	inch	DIN	mm
J015	15A	A001	½B	D015	15A
J020	20A	A002	¾B	D020	20A
J025	25A	A003	1B	D025	25A
J040	40A	A004	1½B	D040	40A
J050	50A	A005	2B	D050	50A
J065	65A	A006	2½B	D065	65A
J080	80A	A007	3B	D080	80A
J100	100A	A008	4B	D100	100A
J125	125A	A009	5B	D125	125A
J150	150A	A010	6B	D150	150A
J200	200A	A011	8B	D200	200A
		0XXX	Other		

3. Glass material

- T** Tempered
O Other

4. Flange rating code

JIS		ANSI		PN	
J010	JIS 10K	A010	ANSI 150 Lb	P010	10 bar
J020	JIS 20K	A020	ANSI 300 Lb	P016	16 bar
XXXX	None	OXXX	Other		

5. Screwed connection

- A** NPT (F)
J PT (F)
N None

6. Gaskets material

- N** Non-asbestos
T Teflon
O Other

7. Body material

- C** Carbon steel (A216 WCB)
4 304SS (A351 CF8)
6 316SS (A351 CF8M)
O Other

Sample ordering code

1	2	3	4	5	6	7
S300	A007	T	A010	N	T	4