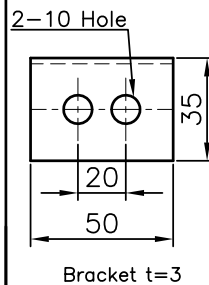
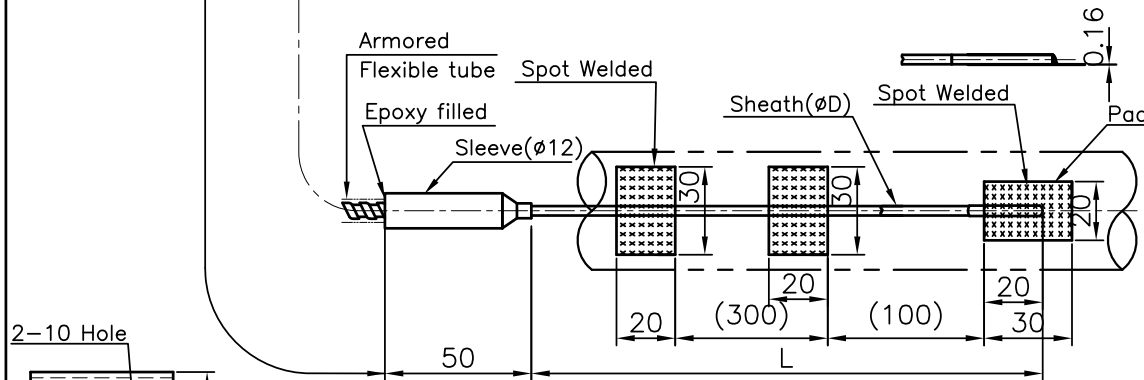


## GENERAL SPECIFICATION

- Head  
Material : Aluminum alloy(Standard)  
Option : ☐304SS ☐316SS  
Surface color : Metallic silver  
Construction : Weatherproof
- Terminal block material : Ceramic
- Insulation material for lead wires  
☐ PVC ☐ Teflon  
☐ Non-asbestos ☐ Outer shield  
☐ Other \_\_\_\_\_
- Jacket material for flexible tubing  
☐ Shrink tube ☐ PVC coating  
☐ None
- Mounting Bracket material :  
☐ 304SS(St'd) ☐ 316L SS  
\* Pad Size : 30 x 20 x 0.16  
\* Pad material : ☐ 316L SS ☐ Inconel600  
\* Make spot-welding 30 points or more.

## ORDERING INFORMATION

- Model : R99 ☐1 (Single, 2-Wire)  
☐2 (Double, 4-Wire)
- Head Type : General (Weatherproof)  
& Tip shape : ☐ C : Ungrounded ☐ D : Grounded
- Element(Tolerance)  
\* Grade : Standard 0.75 / 0.5("E", "B")  
☐ K : K ☐ J : J ☐ T : T ☐ E : E ☐ N : N ☐ B : B  
\* Grade : Special 0.4  
☐ 1 : K ☐ 2 : J ☐ 3 : T ☐ 4 : E ☐ 5 : N  
☐ Z : Other \_\_\_\_\_
- Sheath material  
☐ 2 : Inconel600 ☐ 3 : 310SS  
☐ 4 : 446SS ☐ 5 : 347SS ☐ 6 : 321SS  
☐ 7 : 316L SS ☐ 9 : Other \_\_\_\_\_
- Sheath outer diameter( $\phi$ D)  
☐ D : 3.2 ☐ E : 4.8 ☐ Z : Other \_\_\_\_\_  
(If you need other sheath outer diameter, please contact the head office.)
- Welded pad type : Sheet metal type
- Conduit connection ☐ With adaptor ☐ None  
☐ 1 : PF 1/2" ☐ 2 : PT 1/2" ☐ 3 : NPT 1/2"  
☐ 4 : PF 3/4" ☐ 5 : PT 3/4" ☐ 6 : NPT 3/4"  
☐ 8 : M20x1.5P ☐ 9 : Other \_\_\_\_\_  
\* Conduit adaptor material :  
☐ Brass+Ni.plating ☐ 304SS  
(Only 'PT' Thread)
- Mounting & Connection type  
☐ AAA : None
- Insert length "L" : \_\_\_\_\_ (mm)
- Lead wire length "A" : \_\_\_\_\_ (mm)



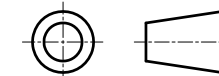
The Colors of each wires can be replaced with the ones of the user's choice.  
\*Use PVC standard colors

Element type		□ EN(IEC)		□ ANSI		□ JIS(KS)	
		+	-	+	-	+	-
T	(+)	K Green	White	Yellow	Red	Red	White
	(-)	E Purple	White	Purple	Red	Red	White
T	(+)	J Black	White	White	Red	Red	White
	(-)	T Brown	White	Blue	Red	Red	White
B	(+)	B Gray	White	Gray	Red	Red	White
	(-)	S,R Orange	White	Black	Red	Red	White

This drawing and the specifications are the intellectual property of WISE CONTROL INC. Therefore, without a prior written consent from WISE CONTROL INC., it is strictly prohibited to reproduce the drawing or manufacture the identical products according to its specifications provided here.

LENGTH (UNIT:mm)		
Parts	Nominal Length	Tolerance
Metal Sheathed R.T.D & T.C R.T.D units	Below 250	±3
	250 & Above, Below 1000	±5
	1000 & Above	±10
Extension Lead wires	Below 1000	±10
	1000 & Above	

## THIRD ANGLE PROJECTION



**WISE**<sup>®</sup>  
WISE Control Inc.

	SIGNATURE	DATE	DRAWING TITLE : Sheet metal pad type thermocouple		
PREPARED BY	S.M.JUNG	23.05.25	MODEL : R990		
REVIEWED BY	H.J.KIM	23.05.25	PROJECT : -		
APPROVED BY	H.J.KIM	23.05.25	DWG NO. : R990C-NN-03		
REV. NO.	0		SCALE : N/S	W.T.	SHEET OF

## REVISION

NO	REASON	DATE	PREPARED BY	REVIEWED BY	APPROVED BY
2					
1					