

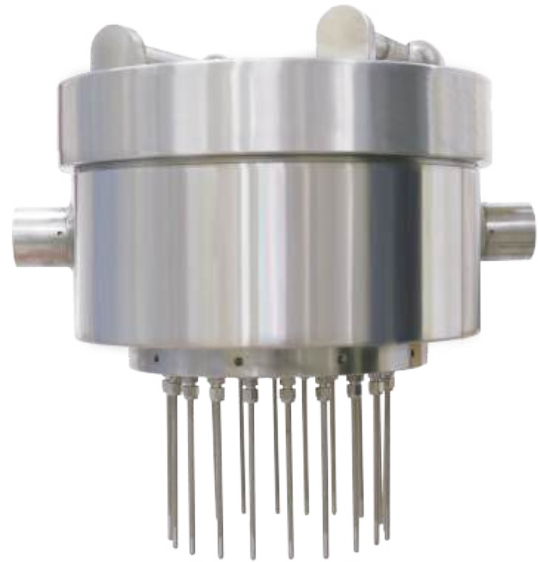
Cool-down and leak detector

Model : R190 (RL series)

Spec. sheet no. RD01-03

Service intended

R190 series are explosion proof temperature sensors with a high accuracy and a high reliability for cryogenic industries such as LNG tank terminal and oxygen generator. The temperature sensors are available as RTD depending on the usage, and it can be designed according to user's request. Furthermore, these sensors can be manufactured according to the requested specification of flange or thread for required measuring points.



Standard features

Junction box

316SS

Temperature range

-200 ~ 100 °C

Element

Pt 100Ω at 0°C

Maximum measuring points

15 points

Sheath material

316L SS

Tolerances on temperature reading

Class A : $\pm (0.15 + 0.002 | t |)$

Class B : $\pm (0.3 + 0.005 | t |)$

Degree of protection

EN60529/IEC529/IP56

EN60529/IEC529/IP66

Sheath outer diameter

3.2, 4.8 and 6.4 mm

Certificates

KCS Ex d IIC T6

WISE[®]

Main order

Ordering information

1. Base model

R190 Cool-down and leak detector

2. Junction box

- H** Explosion proof type
- Z** Other

3. Element (Tolerance)

- Q** Pt 100Ω (B)
- 9** Pt 100Ω (A)

4. Sheath material

- 1** 316L SS
- 9** Other

5. Sheath outer diameter (mm)

- D** 3.2
- E** 4.8
- F** 6.4

6. Measuring point

- 01** 1
- 02** 2
- 03** 3
- 04** 4
- 05** 5
- 06** 6
- 07** 7
- 08** 8
- 09** 9
- 10** 10
- 11** 11
- 12** 12
- 13** 13
- 14** 14
- 15** 15

7. Conduit connection

- 3** ½" NPT
- 6** ¾" NPT
- 7** None
- 8** M20 x 1.5P
- 9** Other

8. Connection type

XX Refer to insert length table (12th and 13th character)

9. Insert length

X Refer to insert length table (14th character)

10. Option

- 0** None
- 1** Accessories

Sample ordering code

1	2	3	4	5	6	7	8	9	10
R190	H	Q	1	F	12	3	XX	X	1



© WISE Control Inc. All rights reserved. ALL PRODUCT, PRODUCT SPECIFICATIONS AND DATA ARE SUBJECT TO CHANGE WITHOUT NOTICE TO IMPROVE RELIABILITY, FUNCTION OR DESIGN OR OTHERWISE.

Mounting, connection type and insert length table - 12th thru 14th characters

12 th character		13 th character		14 th character	
Code	Connection size and connector material	Code	Connection type	Code	Insert length (m)
A	None	A	None	A	2
B	1/8" and 304SS	B	PT	B	3
C	1/4" and 304SS	C	NPT	C	4
D	3/8" and 304SS	D	PF	D	5
E	1/2" and 304SS	E	NPS	E	6
F	3/4" and 304SS	F	UNF	F	7
G	1" and 304SS	G	BSPT	G	8
H	1 1/4" and 304SS	H	BSPF	H	9
J	1 1/2" and 304SS	J	MM	J	10
K	2" and 304SS	K	B16.5 Class 150 RF	K	15
L	3" and 304SS	L	B16.5 Class 150 FF	L	20
M	7/16" and 304SS	M	B16.5 Class 300 RF	M	25
N	1/8" and 316SS	N	B16.5 Class 300 FF	N	30
P	1/4" and 316SS	O	Sanitary	P	35
Q	3/8" and 316SS	P	B16.5 Class 600 RF	Q	40
R	1/2" and 316SS	Q	B16.5 Class 600 FF	R	45
S	3/4" and 316SS	R	JIS 5K RF	S	50
T	1" and 316SS	S	JIS 5K FF	Z	Other
U	1 1/4" and 316SS	T	JIS 10K RF		
V	1 1/2" and 316SS	U	JIS 10K FF		
W	2" and 316SS	V	JIS 20K RF		
X	3" and 316SS	W	JIS 20K FF		
Y	7/16" and 316SS	X	B16.5 Class 1500 RTJ		
Z	Other	Y	B16.5 Class 2500 RTJ		
		Z	Other		

- Note for 14th character, please choose a code of next higher length if applicable length is not. Actual length shall be specified.

R190 : Standard product drawing

