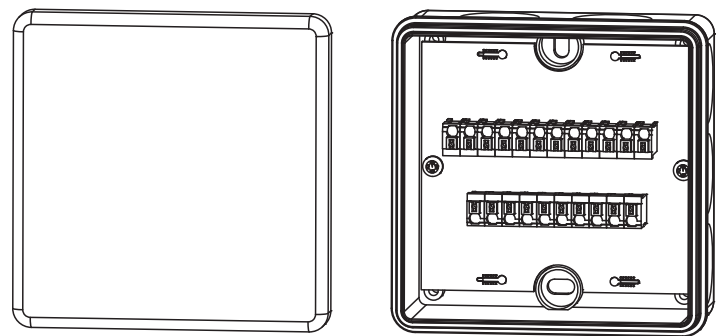


# Extension socket for temperature probe pair



## Installation Instructions



90244299T94Z001K000

V1.00/EN/00680060



# Contents

---

<b>1</b>	<b>Application and dimensions</b> .....	<b>4</b>
<b>2</b>	<b>Cable and installation</b> .....	<b>5</b>
<b>3</b>	<b>Connection</b> .....	<b>6</b>

# 1 Application and dimensions

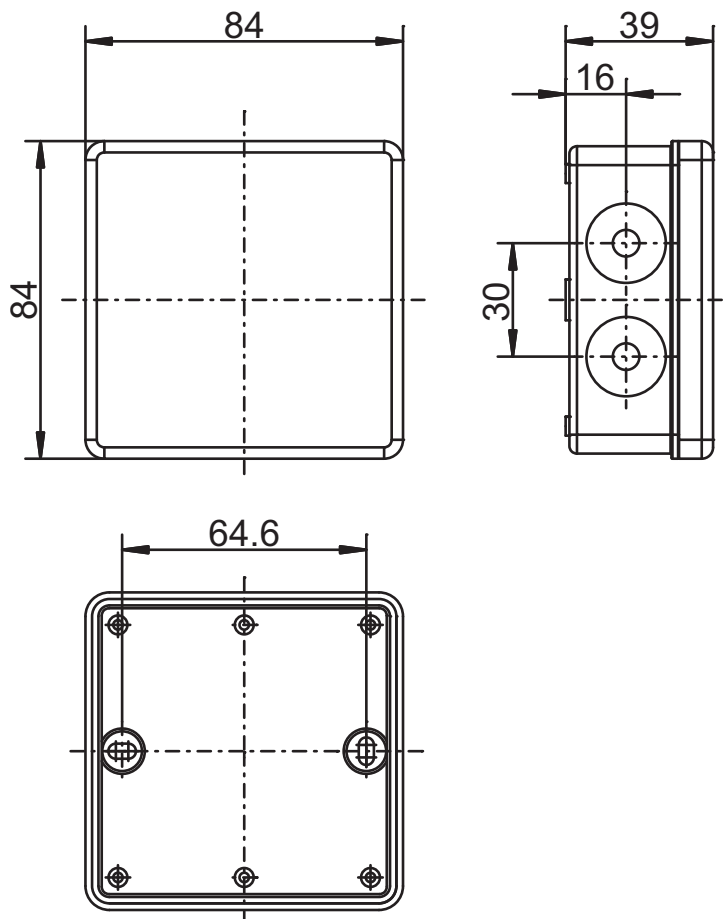
---

## Application

The extension sockets for the temperature probe can be used to clearly and efficiently extend the cables between the arithmetic units and the two-wire temperature probes or the flow transmitter.

This requires an arithmetic unit with a connection for a four-wire temperature sensor.

## Dimensions



## 2 Cable and installation

### Cable

The shielded cable type  $8 \times 0.5 \text{ mm}^2$  is recommended as the extension cable (2), see chapter 3 "Connection", page 6.

Observe the specifications of the arithmetic unit manufacturer regarding the max. cable length and shielding. For devices used in commercial practice, observe any possible requirements regarding a type approval.

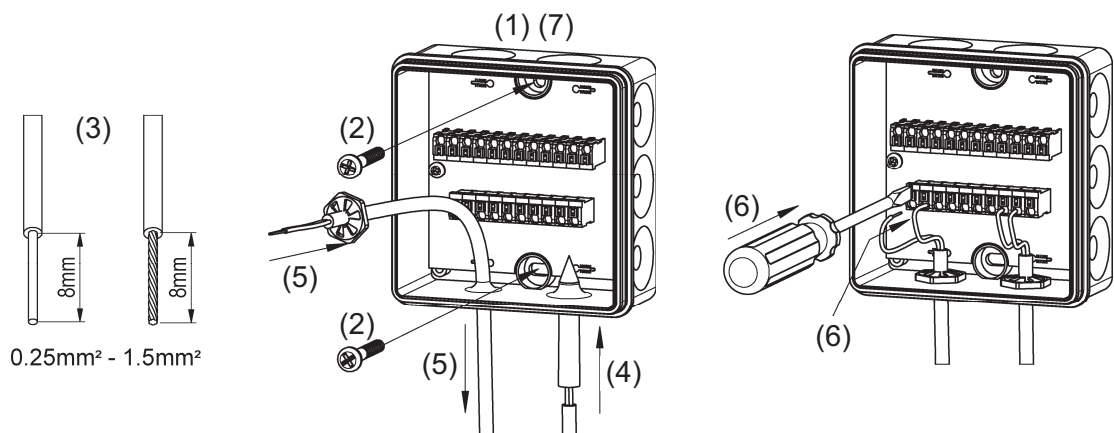
It is recommended that the cable length does not exceed 100 m.



#### NOTE!

The length of the two-wire temperature probe cable must not be changed. This would otherwise lead to measuring errors!

### Installation



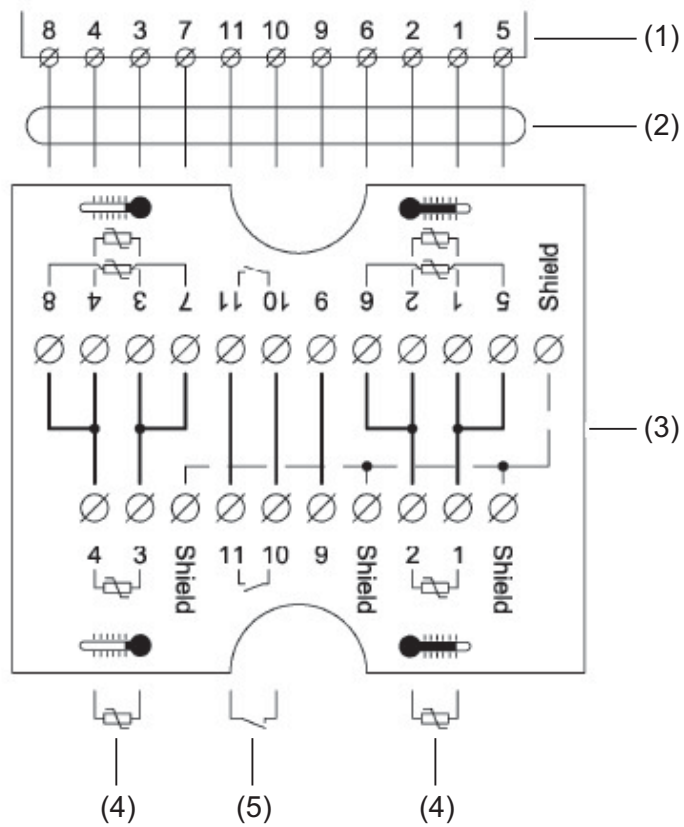
1.	Open lid (clip) (1).
2.	Screw extension socket to the wall (2).
3.	Remove insulation from the cable at a length of 8 mm (3).
4.	Insert cable into the opening of the accompanying awl and press it through the housing wall (4).
5.	Push the cable relief rosette onto the cable and pull back the cable until the rosette is in contact with the housing (5).
6.	Connect the cable (6).
7.	Close lid (clip) (7).



#### NOTE!

Once the installation is complete, the extension socket must be secured against manipulation using the adhesive seals supplied.

### 3 Connection



(1) Arithmetic unit
(2) Extension cable
(3) Extension socket circuit board for temperature probe
(4) Resistance temperature probe for two-wire connection
(5) Flow transmitter





**JUMO GmbH & Co. KG**

Street address:  
Moritz-Juchheim-Straße 1  
36039 Fulda, Germany

Delivery address:  
Mackenrodtstraße 14  
36039 Fulda, Germany

Postal address:  
36035 Fulda, Germany

Phone: +49 661 6003-0  
Fax: +49 661 6003-607  
Email: [mail@jumo.net](mailto:mail@jumo.net)  
Internet: [www.jumo.net](http://www.jumo.net)

**JUMO Instrument Co. Ltd.**

JUMO House  
Temple Bank, Riverway  
Harlow, Essex CM 20 2DY, UK

Phone: +44 1279 63 55 33  
Fax: +44 1279 62 50 29  
Email: [sales@jumo.co.uk](mailto:sales@jumo.co.uk)  
Internet: [www.jumo.co.uk](http://www.jumo.co.uk)

**JUMO Process Control, Inc.**

6733 Myers Road  
East Syracuse, NY 13057, USA

Phone: +1 315 437 5866  
Fax: +1 315 437 5860  
Email: [info.us@jumo.net](mailto:info.us@jumo.net)  
Internet: [www.jumousa.com](http://www.jumousa.com)