

JUMO GmbH & Co. KG

Delivery address: Mackenrodtstraße 14
36039 Fulda, Germany
Postal address: 36035 Fulda, Germany
Phone: +49 661 6003-0
Fax: +49 661 6003-607
Email: mail@jumo.net
Internet: www.jumo.net

JUMO Instrument Co. Ltd.

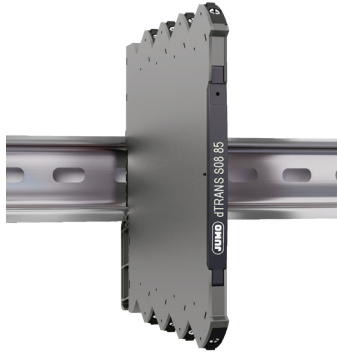
JUMO House
Temple Bank, Riverway
Harlow, Essex CM 20 2DY, UK
Phone: +44 1279 63 55 33
Fax: +44 1279 62 50 29
Email: sales@jumo.co.uk
Internet: www.jumo.co.uk

JUMO Process Control, Inc.

6733 Myers Road
East Syracuse, NY 13057, USA
Phone: +1 315 437 5866
Fax: +1 315 437 5860
Email: info.us@jumo.net
Internet: www.jumousa.com



Data Sheet 707285



JUMO dTRANS S08 85 Loop powered signal isolator

707285

- 1 or 2 channel input loop powered isolator
- Signal 1:1 functional range 0...23 mA
- Low input voltage drop and fast response time
- Excellent accuracy and high load stability
- Slimline 6 mm housing



Application

- 1:1 input loop powered isolator of current signals in the range 0(4)...20 mA.
- 707285 is an easy mounting DIN rail unit.
- A very competitive choice in terms of both price and technology for galvanic isolation of current signals.
- Provides surge suppression and protects control systems from transients and noise.
- 707285 eliminates ground loops and can be used for measuring floating signals.
- The device can be mounted in Safe area or in Zone 2 and Cl. 1 Div 2. area.

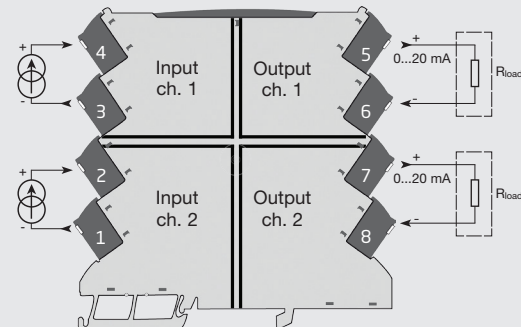
Technical characteristics

- 707285 is powered by the analog input current signal loop.
- Low input voltage drop, typ 1.35 V + V_{out}.
- Excellent conversion accuracy, better than 0.1% in the range 0...20.5 mA.
- Functional range is 0...23 mA which means that 707285 is NAMUR NE43 compliant.
- Inputs and outputs are floating and galvanically separated.
- The output is voltage limited to 17.5 VDC.
- High galvanic isolation of 2.5 kVAC.
- Fast response time < 5 ms.
- Excellent signal/noise ratio > 60 dB.

Mounting / installation / programming

- DIN rail mounting with up to 330 channels per meter.
- Temperature operation range is from -25...+70°C.

Applications



Safe Area or Zone 2 & Cl. 1, Div. 2, gr. A-D

Order

Type	Product name	Description	Part no./TN (order code)
707285	JUMO dTRANS S08 85A1	Loop powered signal isolator (1 channel)	00697490
707285	JUMO dTRANS S08 85A2	Loop powered signal isolator (2 channel)	00697491

Environmental Conditions

Operating temperature	-25°C to +70°C
Storage temperature.....	-40°C to +85°C
Calibration temperature.....	20...28°C
Relative humidity	< 95% RH (non-cond.)
Protection degree	IP20
Installation in.....	Pollution degree 2 & measurement / overvoltage cat. II

Mechanical specifications

Dimensions (HxWxD)	113 x 6.1 x 115 mm
Weight approx	70 g
DIN rail type.....	DIN EN 60715/35 mm
Wire size.....	0.13 x 2.5 mm ² / AWG 26...12 stranded wire
Screw terminal torque.....	0.5 Nm
Vibration	IEC 60068-2-6
2...25 Hz	±1.6 mm
25...100 Hz	±4 g

Common specifications

Supply

Power dissipation, per channel.....	30 mW
-------------------------------------	-------

Isolation voltage

Isolation voltage, test / working	2.5 kVAC / 300 VAC (reinforced)
Zone 2 / Div. 2	250 VAC

Response time

Response time (0...90%, 100...10%).....	< 5 ms
---	--------

Signal / noise ratio	> 60 dB
Accuracy.....	Better than 0.1%
Cut-off frequency (3 dB)	100 Hz
EMC immunity influence.....	< ±0.5% of span
Extended EMC immunity: NAMUR	
NE21, A criterion, burst.....	< ±1% of span

Input specifications

Current input

Measurement range	0...23 mA
Input voltage drop.....	(Unit voltage drop) + Vout.
Signal conversion	1:1
Start-up current, typ.....	10 µA
Current input overload, max	50 mA
Input to output voltage drop, typ.....	1.35 V + (0.015 x Vout.)

Output specifications

Current output

Signal range	0...23 mA
Load (@ current output)	≤ 600 Ω
Load stability.....	< 0.01% of span / 100 Ω
Voltage limit	17.5 V
of span.....	= 0...20 mA

I.S. / Ex marking

ATEX	II 3 G Ex nA IIC T4 Gc
IECEX	Ex nA IIC T4 Gc

Observed authority requirements

EMC.....	2014/30/EU
LVD.....	2014/35/EU
RoHS.....	2011/65/EU

Approvals

ATEX 2014/34/EU	DEKRA 18ATEX0007 X
IECEX	DEK 18.0006 X
DNV-GL Marine	DNVGL-CG-0339
UL	E201387