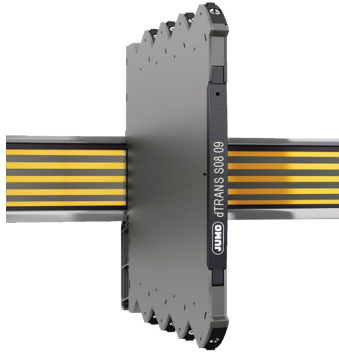


**JUMO GmbH & Co. KG**  
 Delivery address: Mackenrodtstraße 14  
 36039 Fulda, Germany  
 Postal address: 36035 Fulda, Germany  
 Phone: +49 661 6003-0  
 Fax: +49 661 6003-607  
 Email: mail@jumo.net  
 Internet: www.jumo.net

**JUMO Instrument Co. Ltd.**  
 JUMO House  
 Temple Bank, Riverway  
 Harlow, Essex CM 20 2DY, UK  
 Phone: +44 1279 63 55 33  
 Fax: +44 1279 62 50 29  
 Email: sales@jumo.co.uk  
 Internet: www.jumo.co.uk

**JUMO Process Control, Inc.**  
 6733 Myers Road  
 East Syracuse, NY 13057, USA  
 Phone: +1 315 437 5866  
 Fax: +1 315 437 5860  
 Email: info.us@jumo.net  
 Internet: www.jumousa.com



## JUMO dTRANS S08 09 Signal converter (V, mA)/supply isolator/splitter

### 707209

- Isolation and conversion of standard DC signals
- Slimline housing of 6 mm
- Power supply and signal isolator for 2-wire transmitter
- Splitter function: 1 in - 2 out
- DIP-switch configured



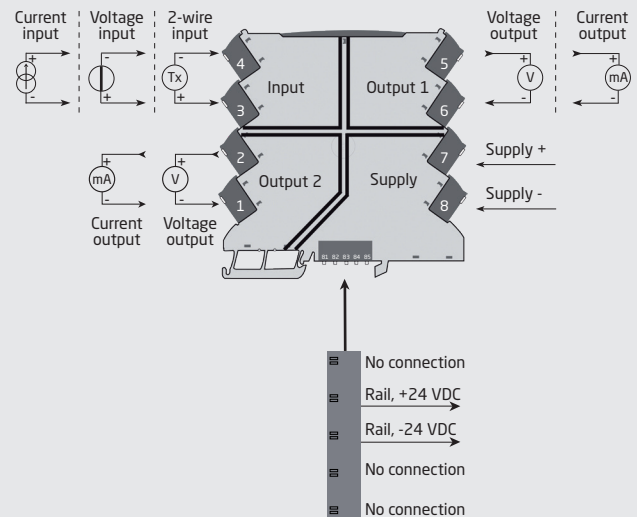
#### Application

- Isolation and conversion of standard DC signals.
- Galvanic separation of analog current and voltage signals.
- Elimination of ground loops and measurement of floating signals.
- A competitive choice in terms of both price and technology for galvanic isolation of current and voltage signals to SCADA systems or PLC equipment.
- Installation in ATEX Ex zone 2 / IECEx zone 2.
- Suitable for environments with high vibration stress, e.g. ships.

#### Technical characteristics

- Easy configuration via DIP-switches.
- The input is protected against overvoltage and polarity error.
- Factory-calibrated measurement ranges.
- Inputs and outputs are floating and galvanically separated.

#### Applications



**Safe Area or Zone 2 & Cl. 1, Div. 2, gr. A-D**

## Order

Type	Product name	Description	Part no./TN (order code)
707209	JUMO dTRANS S08 09	Signal converter (V, mA)/ supply isolator/splitter	00697486

### Environmental Conditions

Operating temperature .....	-25°C to +70°C
Storage temperature.....	-40°C to +85°C
Calibration temperature.....	20...28°C
Relative humidity .....	< 95% RH (non-cond.)
Protection degree .....	IP20
Installation in.....	Pollution degree 2 & measurement / overvoltage cat. II

### Mechanical specifications

Dimensions (HxWxD).....	113 x 6.1 x 115 mm
Weight approx .....	70 g
DIN rail type.....	DIN EN 60715/35 mm
Wire size.....	0.13 x 2.5 mm <sup>2</sup> / AWG 26...12 stranded wire
Screw terminal torque.....	0.5 Nm
2...25 Hz .....	±1.6 mm
25...100 Hz .....	±4 g

### Common specifications

#### Supply

Supply voltage .....	16.8...31.2 VDC
Max. required power.....	1.20 W
Internal power dissipation.....	0.4 W (typ.) / 0.65 W (max.)

#### Isolation voltage

Isolation voltage, test / working .....	2.5 kVAC / 300 VAC (reinforced)
Zone 2 / Div. 2 .....	250 VAC

#### Response time

Response time (0...90%, 100...10%).....	< 7 ms
Programming .....	DIP-switches
Signal / noise ratio .....	> 60 dB
Cut-off frequency (3 dB) .....	> 100 Hz
Accuracy.....	Better than 0.05% of selected range
Temperature coefficient .....	< ±0.01% of span / °C
EMC immunity influence.....	< ±0.5% of span
Extended EMC immunity: NAMUR NE21, A criterion, burst.....	< ±1% of span

### Input specifications

#### Current input

Measurement range .....	0...23 mA
Programmable measurement ranges.....	0...20 and 4...20 mA
Input voltage drop.....	< 1.5 VDC

#### Voltage input

Measurement range .....	0...10.25 V
Programmable measurement ranges.....	0/1...5 and 0/2...10 V
Measurement range .....	0...11.5 V / 0...5.75 V
Input resistance .....	≥ 500 kΩ
2-wire transmitter supply .....	> 17 V / 20 mA

### Output specifications

#### Current output

Signal range .....	0...23 mA
Programmable signal ranges.....	0 / 4...20 mA
Load (@ current output) .....	≤ 300 Ω
Load stability.....	≤ 0.002% of span / 100 Ω
Current limit .....	≤ 28 mA

#### Voltage output

Signal range .....	0...10 VDC
Programmable signal ranges.....	0/1...5 and 0/2...10 V
Load (@ voltage output).....	≥ 10 kΩ

of span..... = of the DIP-switch selected  
output range

### I.S. / Ex marking

ATEX .....	II 3 G Ex nA IIC T4 Gc
IECEx .....	Ex nA IIC T4 Gc

### Observed authority requirements

EMC.....	2014/30/EU
LVD.....	2014/35/EU
RoHS.....	2011/65/EU

### Approvals

ATEX 2014/34/EU .....	DEKRA 18ATEX0007 X
IECEx .....	DEK 18.0006 X
DNV-GL Marine .....	DNVGL-CG-0339
UL .....	E201387