

Supplementary instructions

Connection of PC/Notebook to VEGA
devices with Bluetooth interface

Bluetooth-USB-Adapter



Document ID: 52454



VEGA

Contents

- 1 For your safety 3**
 - 1.1 Appropriate use..... 3
 - 1.2 General safety instructions 3
 - 1.3 Radio license for USA 3
- 2 Product description 4**
 - 2.1 Configuration..... 4
 - 2.2 Principle of operation..... 4
- 3 Setup 5**
 - 3.1 Preparations..... 5
 - 3.2 Connecting..... 5
- 4 Diagnostics and servicing 6**
 - 4.1 Eliminate error..... 6
- 5 Supplement 7**
 - 5.1 Technical data 7
 - 5.2 Dimensions 7

1 For your safety

1.1 Appropriate use

The Bluetooth-USB adapter is an accessory part for wireless connection of a PC/Notebook to a VEGA instrument with integrated Bluetooth.

1.2 General safety instructions

The safety information in the operating instructions manual of the respective device must be noted.

1.3 Radio license for USA

This approval is only valid for USA. Hence the following text is only available in the English language:

This device complies with Part 15 of the FCC Rules. Operation is subject to the following two conditions:

- This device may not cause interference, and
- This device must accept any interference, including interference that may cause undesired operation

FCC ID: 079BT402

2 Product description

2.1 Configuration

Scope of delivery

The scope of delivery encompasses:

- Bluetooth-USB-Adapter
- Documentation
 - This supplementary instructions manual
 - EU declaration of conformity

Version

The Bluetooth-USB adapter consists of the housing and a USB connector.

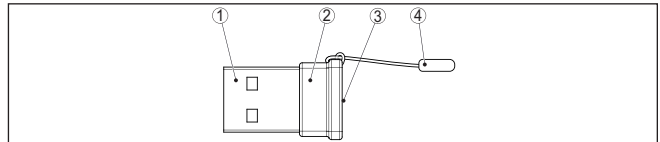


Fig. 1: Configuration Bluetooth-USB-Adapter

- 1 USB plug
- 2 Housing
- 3 LED
- 4 Zipper

2.2 Principle of operation

Function

The Bluetooth-USB adapter enables wireless connection of a PC/ Notebook to VEGA instruments with a display and control module as well as VEGA instruments with integrated Bluetooth functionality.

The wireless connection is made via Bluetooth LE and the instrument is operated by means of PACTware/DTM.

System requirements:

- Adjustment software PACTware with current DTM Collection
- Operating system: Windows 10 or higher
- USB interface 2.0 or higher



Note:

The wireless connection from the PC/Notebook via Bluetooth to the VEGA device is possible via this Bluetooth-USB adapter supplied by VEGA.

Other conventional Bluetooth-USB adapters as well as Bluetooth components integrated into the PC/Notebook are also possible providing that they comply with the Bluetooth-LE standard.

Operating status

An integrated green LED signals the operating status.

3 Setup

3.1 Preparations

Please proceed in this sequence:

- Download DTM Collection from our homepage
- Installation of PACTware and DTM
- Plug the Bluetooth-USB adapter into a free USB port
- Start PACTware

The adapter is recognised by a Windows internal driver and initialised automatically. The LED indicates this by flashing green continuously with approx. 2 Hz.

3.2 Connecting

Start the VEGA project wizard. Select "*Bluetooth*" and "*Start*". Instruments with Bluetooth in the vicinity are searched for and displayed. The LED indicates this by flashing quickly and irregularly.

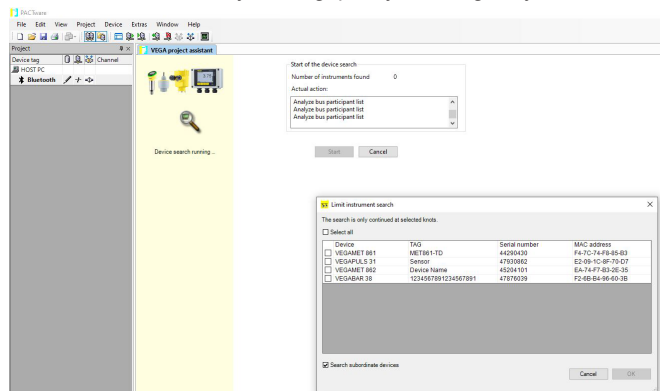


Fig. 2: Example of a PACTware screen with two found Bluetooth instruments

Select the desired instrument and confirm with "OK".

The further steps are described in the operating instructions of the respective instrument.



Note:

The Bluetooth-USB adapter can only be connected actively to one instrument at a time.

4 Diagnostics and servicing

4.1 Eliminate error

Error	Display in project wizard	Cause	Rectification
LED dark, no Bluetooth connection	Bluetooth - other adapter	Integrated Bluetooth function in PC/ Notebook prevents detection/activation of the Bluetooth-USB adapter	Deactivate the internal Bluetooth function in the Windows Device Manager, close PACTware and restart
	Bluetooth - no adapter found	Bluetooth function was switched off in the Windows settings or in the Info-Center	Switch on Bluetooth function, close PACTware and restart

5 Supplement

5.1 Technical data

Materials

Plug/housing	Steel/PVC
--------------	-----------

Ambient conditions

Ambient and operating temperature	-10 ... +50 °C (14 ... +158 °F)
Storage and transport temperature	-20 ... +70 °C (-4 ... +122 °F)
Relative humidity	20 ... 90 % (non-condensing)

Display element

LED flashing green	Operating status
--------------------	------------------

Voltage supply

Operating voltage via USB connection	5 V DC ± 10 %
Power consumption	0.5 W

USB port

Plug connector	USB A
Standard	USB 2.0

Bluetooth function

Standard	Bluetooth LE
Max. participants	1
Effective range typ.	50 m (164.0 ft)

5.2 Dimensions

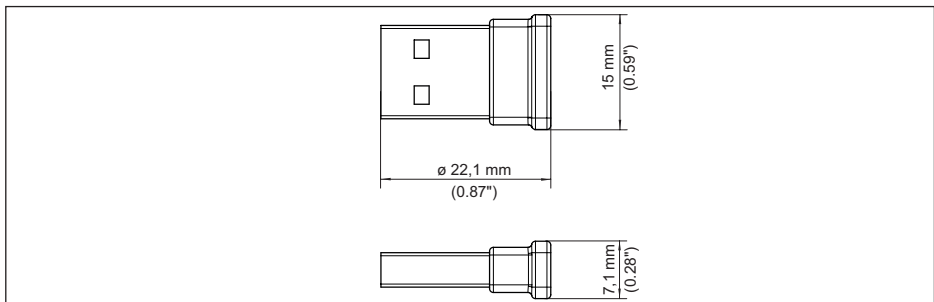
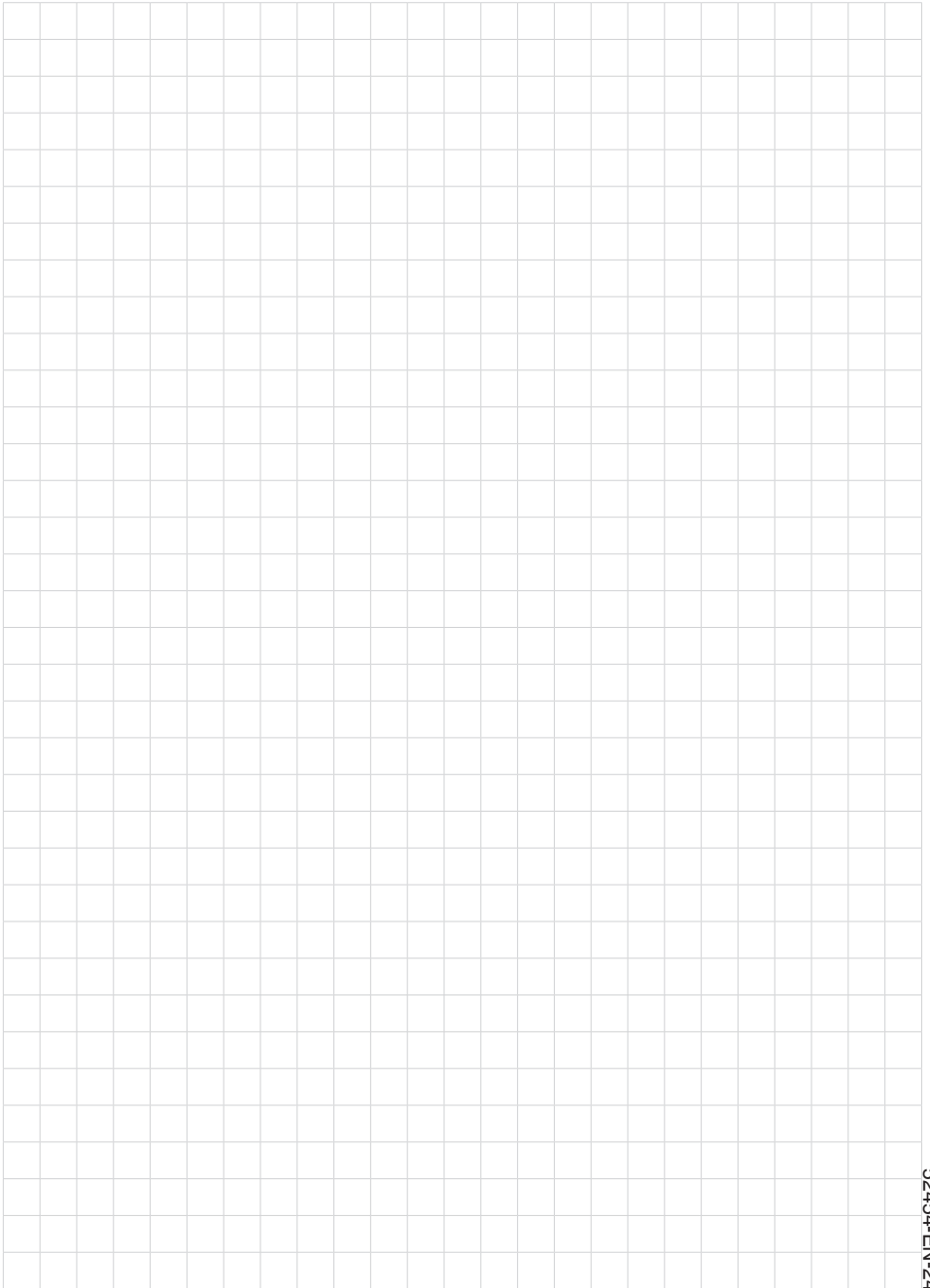
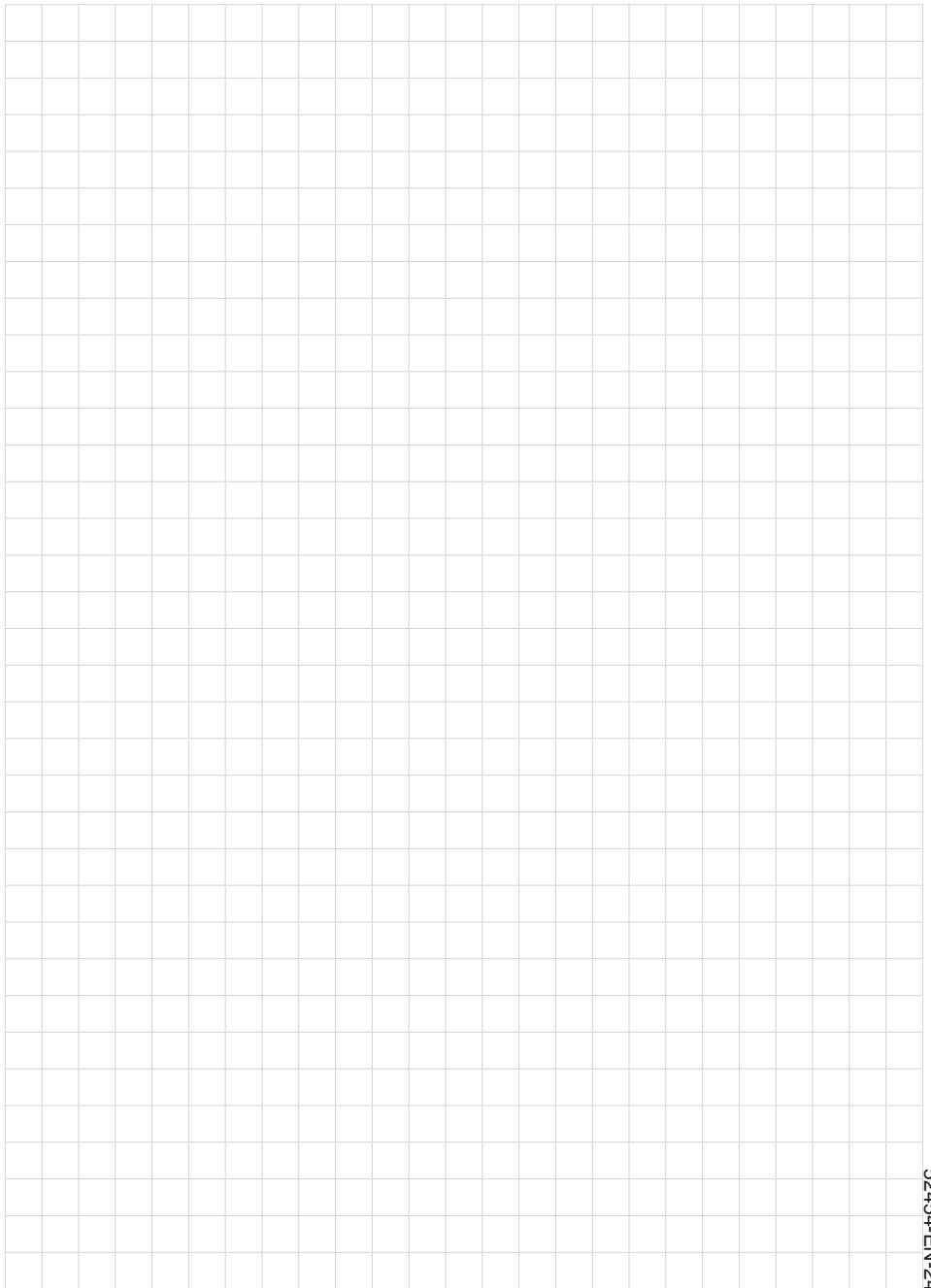


Fig. 3: Bluetooth-USB adapter dimensions





Printing date:

VEGA

All statements concerning scope of delivery, application, practical use and operating conditions of the sensors and processing systems correspond to the information available at the time of printing.

Subject to change without prior notice

© VEGA Grieshaber KG, Schiltach/Germany 2024



52454-EN-240208

VEGA Grieshaber KG
Am Hohenstein 113
77761 Schiltach
Germany

Phone +49 7836 50-0
E-mail: info.de@vega.com
www.vega.com