

# Hermetically sealed case bimetal thermometer

## Model : T112

Spec. sheet no. TD01-03

### Service intended

Bimetal thermometer is used for measuring temperature of gas or fluid. It is suitable for measurement, regulation, and direct monitoring for the fluid. It meets the most stringent criteria on resistance to a corrosive atmosphere and exceptional climatic circumstances.



### Nominal diameter

65, 75, 100, 125 and 150 mm

### Accuracy

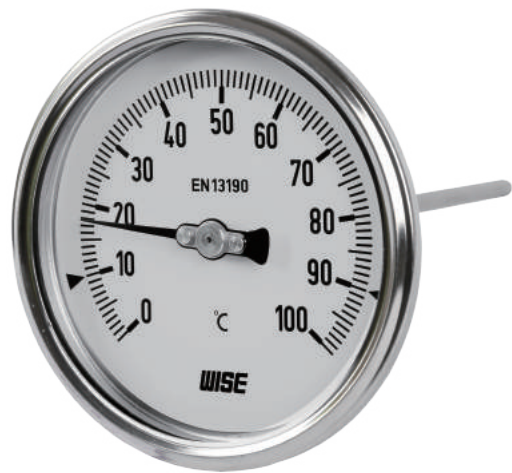
±2.0 % of full scale

### Temperature element

Coiled bimetal

### Working range

Maximum scale value



## Standard features

### Location of stem

Center back connection, direct

### Case

Hermetically sealed, 316L SS

### Cover

Hermetically sealed, 316L SS

### Window

Glass

### Dial

Metallic silver aluminium with black graduations

### Pointer

Black painted aluminium alloy

### Stem

6.0, 6.4, 8.0 and 10.0 mm diameter  
304SS, 316SS and 316L SS  
Max. Insertion length : 2,000 mm

### Zero adjustment

External

### Stem, process connection

1/4", 3/8", 1/2", 3/4" PT, NPT and PF

### Option

±1.0 % of full scale  
Not available with diameter 65 mm

### Certificates

ATEX II 2G Ex h IIC T6...T1 Gb /  
ATEX II 2D Ex h IIIC T85°C...T450°C Db

## Main order

## Ordering information

### 1. Base model

**T112** Hermetically sealed case bimetal thermometer

### 2. Nominal diameter (mm)

**2** 65  
**3** 75  
**4** 100  
**5** 125  
**6** 150

### 3. Type of mounting

**X** Center back connection, direct

### 4. Stem material

**0** 304SS  
**1** 316SS  
**2** 316L SS

### 5. Stem, process connection

**A** None  
**C** 1/4"  
**D** 3/8"  
**E** 1/2"  
**F** 3/4"  
**G** 1 1/2S (Only available with sanitary)  
**H** 2S (Only available with sanitary)  
**I** 2 1/2S (Only available with sanitary)

### 6. Stem connection type (CF: Compression fitting)

**A** None  
**B** PF  
**C** PT  
**D** NPT  
**E** CF + PT  
**F** CF + NPT  
**G** CF + PF  
**H** MT + PT (Movable thread),  
 Not available with diameter 50 and 65 mm  
**I** MT + NPT (Movable thread),  
 Not available with diameter 50 and 65 mm  
**J** MT + PF (Movable thread),  
 Not available with diameter 50 and 65 mm  
**S** Clamp (Movable thread),  
 Not available with diameter 50 and 65 mm

### 7. Stem outer diameter (mm)

**0** 6.0  
**1** 6.4  
**2** 8.0  
**3** 10.0 (Not available process connection, 1/4")

### 8. Range

**XXX** Refer to scale range table

### 9. Insertion length

**X** Refer to insertion length table

### 10. Accessories

**0** None  
**1** Thermowell  
**2** Special accuracy ( $\pm 1.0$  % of full scale)  
**3** Thermowell and special accuracy

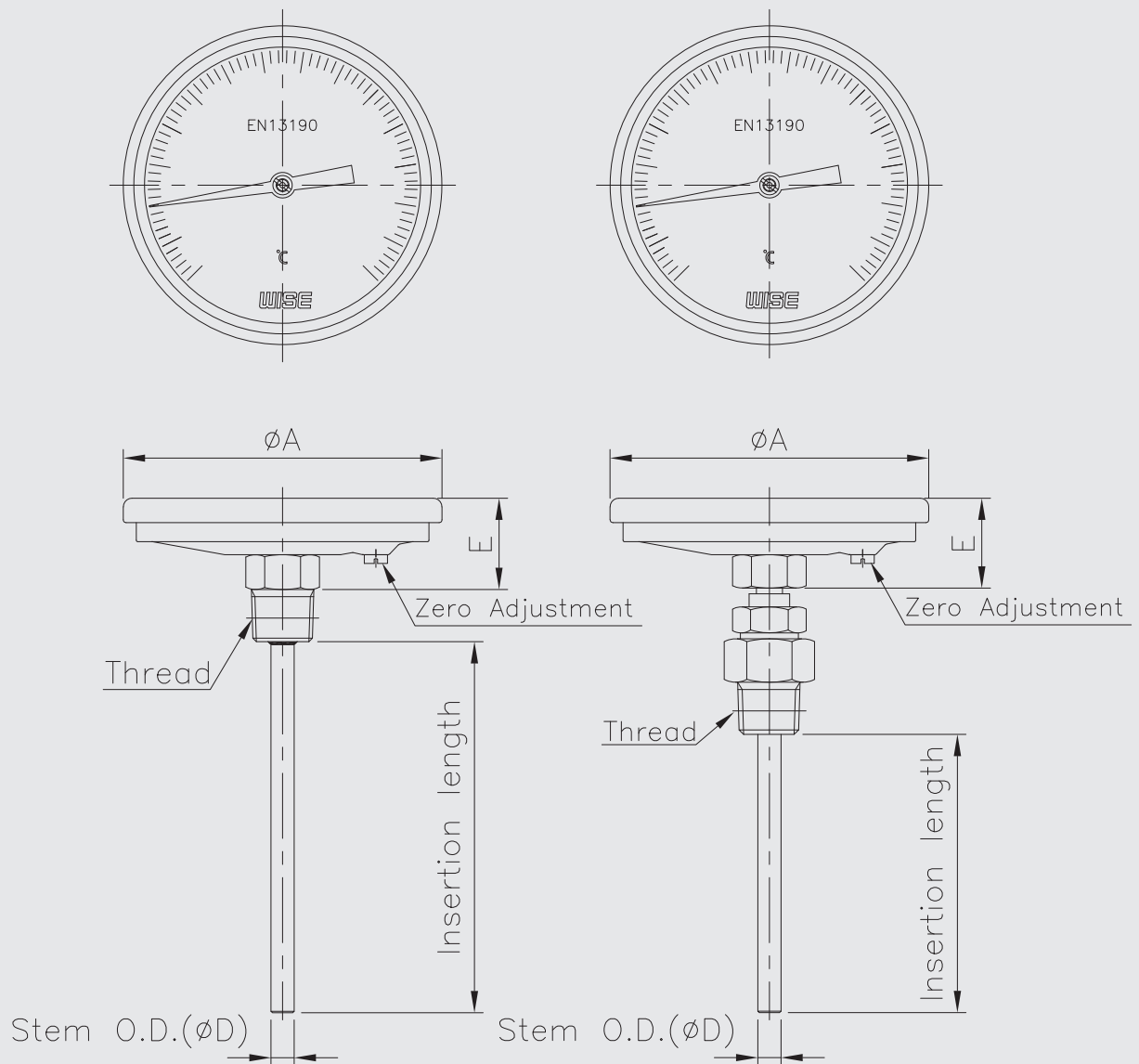
### Sample ordering code

|      |   |   |   |   |   |   |     |   |    |
|------|---|---|---|---|---|---|-----|---|----|
| 1    | 2 | 3 | 4 | 5 | 6 | 7 | 8   | 9 | 10 |
| T112 | 6 | X | 1 | E | D | 1 | XXX | X | 1  |



© WISE Control Inc. All rights reserved. ALL PRODUCT, PRODUCT SPECIFICATIONS AND DATA ARE SUBJECT TO CHANGE WITHOUT NOTICE TO IMPROVE RELIABILITY, FUNCTION OR DESIGN OR OTHERWISE.

## T112 : Type of mounting



Dimensions (mm)

| Dial Size | A     | E±2  |
|-----------|-------|------|
| 65        | 65    | 28   |
| 75        | 86    | 29   |
| 100       | 110   | 31.5 |
| 125       | 137.2 | 30.5 |
| 150       | 166.2 | 30   |

## Scale ranges

| Code | Scale range (°C) | Scale spacing (°C) | Minimum stem length (mm) |              |
|------|------------------|--------------------|--------------------------|--------------|
|      |                  |                    | 6.0 and 6.4              | 8.0 and 10.0 |
| 032  | -50 ~ 50         | 2                  | 55                       | 50           |
| 037  | -50 ~ 100        | 2                  | 45                       | 35           |
| 054  | -30 ~ 50         | 2                  | 70                       | 60           |
| 059  | -30 ~ 100        | 2                  | 50                       | 45           |
| 061  | -30 ~ 120        | 2                  | 45                       | 35           |
| 069  | -20 ~ 50         | 2                  | 80                       | 70           |
| 074  | -20 ~ 100        | 2                  | 45                       | 45           |
| 079  | -20 ~ 150        | 5                  | 40                       | 35           |
| 084  | -10 ~ 50         | 1                  | 95                       | 80           |
| 099  | 0 ~ 50           | 1                  | 110                      | 70           |
| 100  | 0 ~ 60           | 1                  | 95                       | 80           |
| 101  | 0 ~ 70           | 2                  | 80                       | 60           |
| 102  | 0 ~ 80           | 2                  | 70                       | 55           |
| 104  | 0 ~ 100          | 2                  | 55                       | 50           |
| 106  | 0 ~ 120          | 2                  | 50                       | 45           |
| 109  | 0 ~ 150          | 2                  | 45                       | 35           |
| 114  | 0 ~ 200          | 5                  | 35                       | 35           |
| 119  | 0 ~ 250          | 5                  | 35                       | 30           |
| 124  | 0 ~ 300          | 5                  | 35                       | 25           |
| 129  | 0 ~ 350          | 5                  | 30                       | 25           |
| 134  | 0 ~ 400          | 5                  | 80                       | 65           |
| 144  | 0 ~ 500          | 10                 | 70                       | 60           |
| 154  | 0 ~ 600          | 10                 | 70                       | 60           |

\* Dial size 65 mm : Minimum stem length 60 mm

## Insertion length

| Code        | 1  | 2  | 3  | 4  | 5   | 6   | 7   | 8   | 9   | A   | B   | C   |
|-------------|----|----|----|----|-----|-----|-----|-----|-----|-----|-----|-----|
| Length (mm) | 50 | 60 | 70 | 80 | 100 | 120 | 130 | 150 | 175 | 200 | 225 | 250 |

| Code        | D   | E   | F   | G   | H   | J   | K   | L   | M     | N     | P     |
|-------------|-----|-----|-----|-----|-----|-----|-----|-----|-------|-------|-------|
| Length (mm) | 275 | 300 | 350 | 375 | 400 | 450 | 500 | 550 | 1,000 | 1,500 | 2,000 |