

— Main order —

- Base model : P712 (Screwed process connection remote diaphragm seal)
- Gauge model and mounting type  
XX : Refer to gauge model and mounting type table
- Upper flange / Diaphragm material
 

<input type="checkbox"/> B : 304SS / 316LSS	<input type="checkbox"/> E : 316L SS / 316L SS
<input type="checkbox"/> I : Alloy 825 / Alloy 825	<input type="checkbox"/> J : 316SS / 316L SS
<input type="checkbox"/> K : 316SS / Monel	<input type="checkbox"/> L : 316SS / Hastelloy-C
<input type="checkbox"/> M : 316L SS / Monel	<input type="checkbox"/> N : 316SS / Tantalum
<input type="checkbox"/> R : Titanium / Titanium	<input type="checkbox"/> S : 316L SS / Tantalum
<input type="checkbox"/> T : 316SS / Nickel	<input type="checkbox"/> U : 316SS / Alloy 20
<input type="checkbox"/> V : PVC / PTFE	<input type="checkbox"/> X : 316L SS / Hastelloy-C
<input type="checkbox"/> Y : PVDF / PTFE	
<input type="checkbox"/> H : 304SS / 316L SS with PTFE sheet	
<input type="checkbox"/> Q : 316SS / 316L SS with PTFE sheet	

— Sample ordering code —

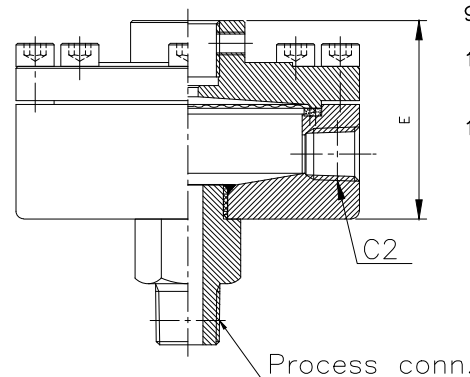
1	2	3	4	5	6	7	8
P712	XX	B	XXX	H	XXX	7X	0

2						
1						
NO	REASON	DATE	PREPARED BY	CHECKED BY	APPROVED BY	

REVISION

\* Options

<Flushing ring type>



- Process connection type  
XXX : Refer to process connection type table

5. Unit

☐ H : bar    ☐ I : MPa    ☐ J : kPa

6. Range

XXX : Refer to pressure range table

7. Under flange material

☐ 7X : Alloy 20    ☐ BX : 304SS    ☐ DX : 304L SS  
☐ CX : 316SS    ☐ EX : 316L SS    ☐ LX : Monel  
☐ KX : Hastelloy-C    ☐ MX : Titanium  
☐ 51 : 316L SS with PTFE coating (see note)  
☐ JX : Inconel 600  
☐ RX : 304SS with PTFE coating (see note)  
☐ PX : 304SS with PTFE lining (see note)  
☐ SX : 316SS with PTFE coating (see note)  
☐ QX : 316SS with PTFE lining (see note)  
☐ 51 : 316L SS with PTFE lining (see note)  
☐ 53 : Teflon    ☐ 22 : Nickel    ☐ 18 : 317SS  
☐ 54 : PVC    ☐ 55 : CPVC    ☐ 39 : Alloy 825  
☐ 56 : PVDF    ☐ ZZ : Other \_\_\_\_\_

Note : PTFE lining and coating is available for the pressure range less than 7 MPa

8. Option

☐ 0 : None    ☐ 1 : Accessories  
☐ 2 : Liquid (Glycerin in gauge)  
☐ E : Liquid (Silicone in gauge)  
☐ F : Flushing ring  
☐ H : PVC jacked capillary tube

— Standard specifications —

9. Accuracy

Refer to gauge model

10. Working temperature

Ambient : -20 ~ 65°C

Fluid : Max. 100°C

11. Element type : Internal diaphragm

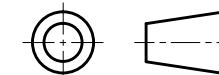
C2	E
NPT 1/4"	53
NPT 3/8"	58
NPT 1/2"	68

This drawing and the specifications are the intellectual property of WISE CONTROL INC. therefore, without a prior written consent from WISE CONTROL INC., it is strictly prohibited to reproduce the drawing or manufacture the identical products according to its specifications provided here.

Unless otherwise specified

Decimal dimensions ±5  
Angle dimensions ±1°  
Dimensions are in milli meter

THIRD ANGLE PROJECTION



	SIGNATURE	DATE
PREPARED BY	K.S.LEE	18.06.01
REVIEWED BY	J.S.PARK	18.06.01
APPROVED BY	D.M.CHO	18.06.01
REV. NO.	0	

**WISE®**

WISE Control Inc.

DRAWING TITLE :

Diaphragm seal type p/g  
Screwed type flange

DWG NO.

P712XXXB-S.T.D

SCALE : N/S

W.T.

SHEET OF