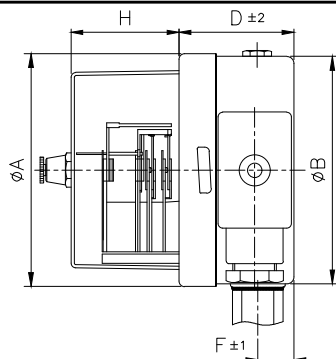
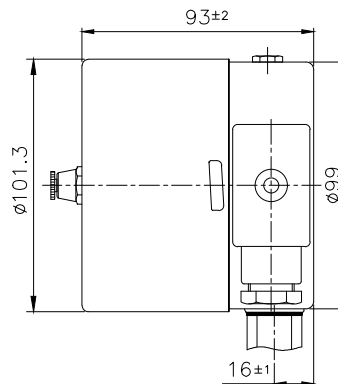
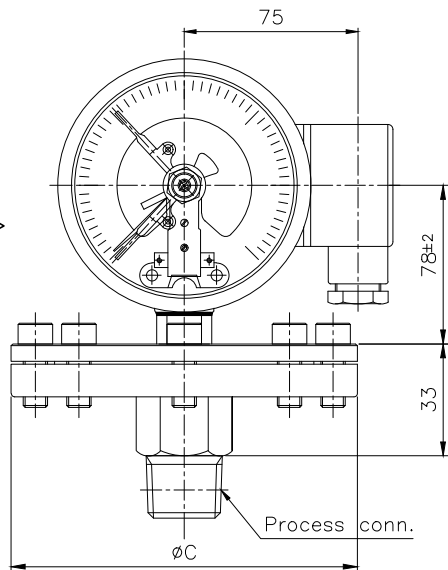


&lt;Modular System Type&gt;

<Contacts System Type>  
(Only 100mm)

## - Main order -

1. Base model  
☐ P571 : Screwed process connection
2. Nominal diameter and window material  
☐ 4 : 100 mm and safety glass  
☐ 5 : 100 mm and polycarbonate window  
☐ 6 : 160 mm and polycarbonate window
3. Contact function  
☐ 1 : High alarm, Normal open contact  
☐ 2 : High and low alarm  
☐ 3 : Low alarm, Normal close alarm  
☐ 4 : Two High alarm  
☐ 5 : Two Low alarm  
☐ 6 : Failsafe high and low alarm
4. Process connection  
 XX : Refer to process connection type table
5. Flange material  
☐ B : 304SS    ☐ D : 316SS    ☐ E : 316L SS

## - Sample ordering code -

1	2	3	4	5	6	7	8	9
P571	6	1	XX	D	H	XXX	0	0

2						
1						
NO	REASON	DATE	PREPARED BY	CHECKED BY	APPROVED BY	

## REVISION

WISE-C-QAP-0501-3 Rev.1 (A4W 297 \* 210)

## 6. Unit

☐ H : bar    ☐ I : MPa    ☐ J : kPa    ☐ S : mbar

## 7. Range

XXX : Refer to pressure unit and range table

## 8. Over range protection

- ☐
- 0 : Overpressure safety 130 % of full scale value
- 
- ☐
- 1 : Overpressure safety 500 % of full scale value, Max. 4 Mpa

## 9. Option

- ☐
- 0 : None
- 
- ☐
- 1 : Accessories

## - Standard specifications -

## 11. Working pressure

Steady : Full scale value

Fluctuating : 90% of full scale value

## 12. Over range protection

Overpressure safety 130% of full scale value

Overpressure safety 500% of full scale value, Max. 4MPa (Option)

## 13. Working temperature

Ambient : -20 ~ 65°C

Fluid : Max. 100°C

## 14. Degree of protection

EN60529/IEC529/IP67

## 15. Element type : Diaphragm

## 16. Conduit connection : M20 X 1.5P

## 17. Mat'l

1) Case &amp; Cover : Stainless steel (304SS)

2) Upper flange

☐ 304SS    ☐ 316SS

3) Diaphragm

☐ ≤40 kPa stainless steel(316Ti SS)

☐ >40 kPa duratherm 600

4) Pressure connection and under flange

☐ 304SS    ☐ 316SS    ☐ 316L SS

5) Movement : Stainless steel

6) Windows

☐ Safety glass : Only available with diameter 100 mm

☐ Polycarbonate : 100 and 160 mm

## 18. Dimension

	A	B	D	E	F	H	N	C	
								≤40kPa	>40 kPa
100mm	101.3	99	50	78	16	34.5	75	150	100
160mm	160.6	159	52.5	108	15.8	34	105		

This drawing and the specifications are the intellectual property of WISE CONTROL INC. therefore, without a prior written consent from WISE CONTROL INC., it is strictly prohibited to reproduce the drawing or manufacture the identical products according to its specifications provided here.

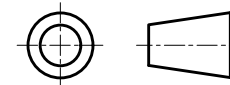
## Unless otherwise specified

Decimal dimensions ±5

Angle dimensions ±1°

Dimensions are in milli meter

## THIRD ANGLE PROJECTION



	SIGNATURE	DATE	DRAWING TITLE :		
PREPARED BY	K.S.LEE	18.06.01	ELECTRICAL CONTACT TYPE		
REVIEWED BY	J.S.PARK	18.06.01	DIAPHRAGM P/G		
APPROVED BY	D.M.CHO	18.06.01	DWG NO.		
REV. NO.	0		P571XXA-S.T.D		
			SCALE : N/S	W.T.	SHEET OF

**WISE®**

WISE Control Inc.

 DRAWING TITLE :  
 ELECTRICAL CONTACT TYPE  
 DIAPHRAGM P/G

DWG NO.

P571XXA-S.T.D

SCALE : N/S    W.T.    SHEET OF

주식회사 와이즈컨전