

## - Main order -

1. Base model : P239 (Test pressure gauge)  
 2. Nominal diameter (mm)

☐ 8 : 250

3. Type of mounting

☐ G : Lower back connection, direct

4. Accuracy

☐ 9 :  $\pm 0.25\%$  of full scale

5. Process connection

☐ D :  $3/8"$  ☐ E :  $1/2"$

6. Connection type

☐ B : PF ☐ C : PT ☐ D : NPT

7. Unit

☐ H : bar ☐ I : MPa ☐ J : kPa

8. Range

XXX : Refer to pressure unit and range table

9. Dial color

☐ 1 : 2 colors ☐ 5 : 3 colors

10. Option

☐ 0 : None ☐ 1 : Accessories

☐ 2 : Orifice ☐ 3 : Accessories and Orifice

## - Standard specifications -

11. Working pressure

Steady : Full scale value

12. Working temperature

Ambient :  $-40 \sim 65^{\circ}\text{C}$ , Fluid : Max.  $100^{\circ}\text{C}$

13. Element type : Bourdon tube

14. Mat'l

1) Case & Cover : Black painted aluminium

2) Element : Stainless steel (316SS)

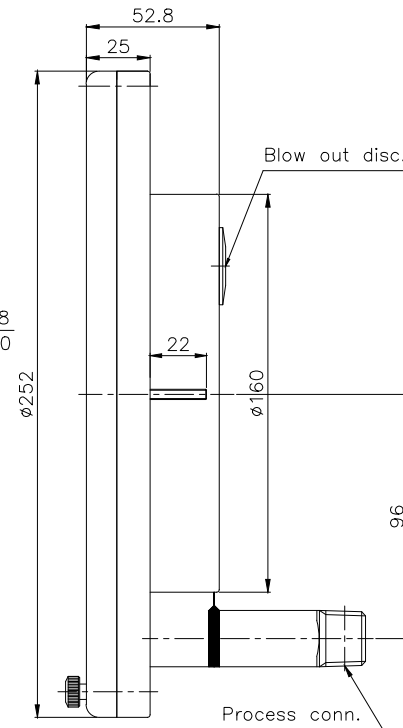
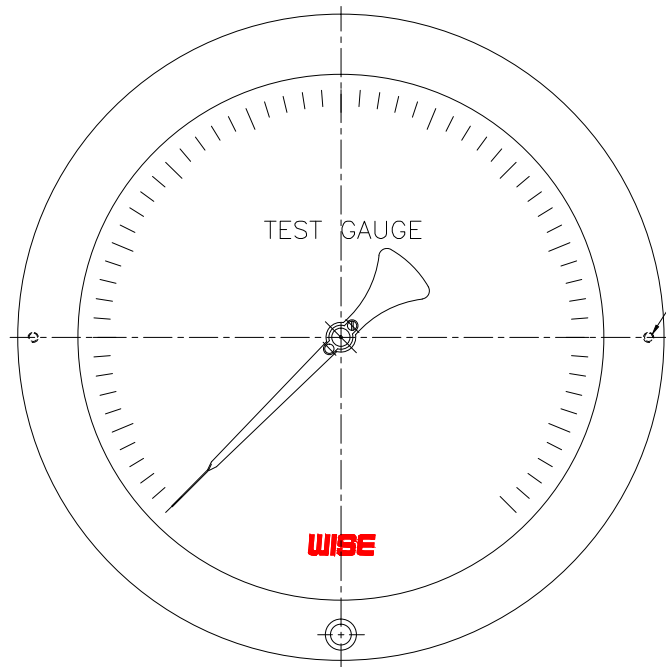
3) Process connection : Stainless steel (316SS)

4) Movement : Brass

5) Windows : Safety glass

6) Dial :  $270^{\circ}$  mirror band scale

White aluminium with black graduations



- Sample ordering code -

1	2	3	4	5	6	7	8	9	10
P239	8	G	9	E	C	H	XXX	3	0

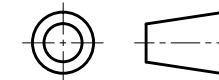
2					
1					
NO	REASON	DATE	PREPARED BY	CHECKED BY	APPROVED BY

## REVISION

This drawing and the specifications are the intellectual property of WISE CONTROL INC. therefore, without a prior written consent from WISE CONTROL INC., it is strictly prohibited to reproduce the drawing or manufacture the identical products according to its specifications provided here.

Unless otherwise specified  
 Decimal dimensions  $\pm 5$   
 Angle dimensions  $\pm 1^{\circ}$   
 Dimensions are in milli meter

## THIRD ANGLE PROJECTION



	SIGNATURE	DATE
PREPARED BY	K.S.LEE	18.06.01
REVIEWED BY	J.S.PARK	18.06.01
APPROVED BY	D.M.CHO	18.06.01
REV. NO.	0	

**WISE**<sup>®</sup>  
 WISE Control Inc.

DRAWING TITLE :  
 "G" TYPE  
 TEST PRESSURE GAUGE

DWG NO.  
 P239250G-S.T.D

SCALE : N/S W.T. SHEET OF