

PROFILE

Different topologies for EtherCAT networks can be configured with **G3-JNC** junction modules.: Linear, Star, Tree.

All I/O modules connected to the G3-JNC are visible to the master as independent and separate Ethercat nodes. The G3-JNC module supports Distributed Clock operation and Cable Redundancy.

The modules are available in two formats:

- The G3-JNC3 module consists of 3 RJ45 ports and an interface to the G-Mation G3 system bus. System bus is the input port, while the others allow to connect new Ethercat devices to those present in the bus. The G3-JNC3 module does not require external power.
- The G3-JNC4 module is a stand-alone Ethercat switch consisting of 4 RJ45 ports. It allows to create complex network topologies and requires an external power supply of 24Vdc±25%, 150mA max.



TECHNICAL DATA

RJ45 ports	3
Input port	Directly connected with bus G-Mation G3
Fieldbus connection	IN / OUT standard RJ45 connectors. Use minimum Cat 5E Shielded STP cable for 100m maximum cable length
Power supply	From G3-ECAT or G3-Px modules, it doesn't need any external power supply connection
Power dissipation	1,2 W, ±5%
G3-JNC3 – ET1100 port map	IN G3-BUS → PORT 0 X2 → PORT 1 X3 OUT → PORT 2 X4 → PORT 3

G3-JNC4

Power supply	24VDC ± 25% 3A max; 32V max tension
Power dissipation	1,8 W, ±5%
RJ45 ports	4
Fieldbus connection	IN / OUT standard RJ45 connectors. Use minimum Cat 5E Shielded STP cable for 100m maximum cable length
Protection	Reverse polarity
G3-JNC4 – ET1100 port map	IN X1 → PORT 0 X2 → PORT 1 OUT X3 → PORT 2 X4 → PORT 3

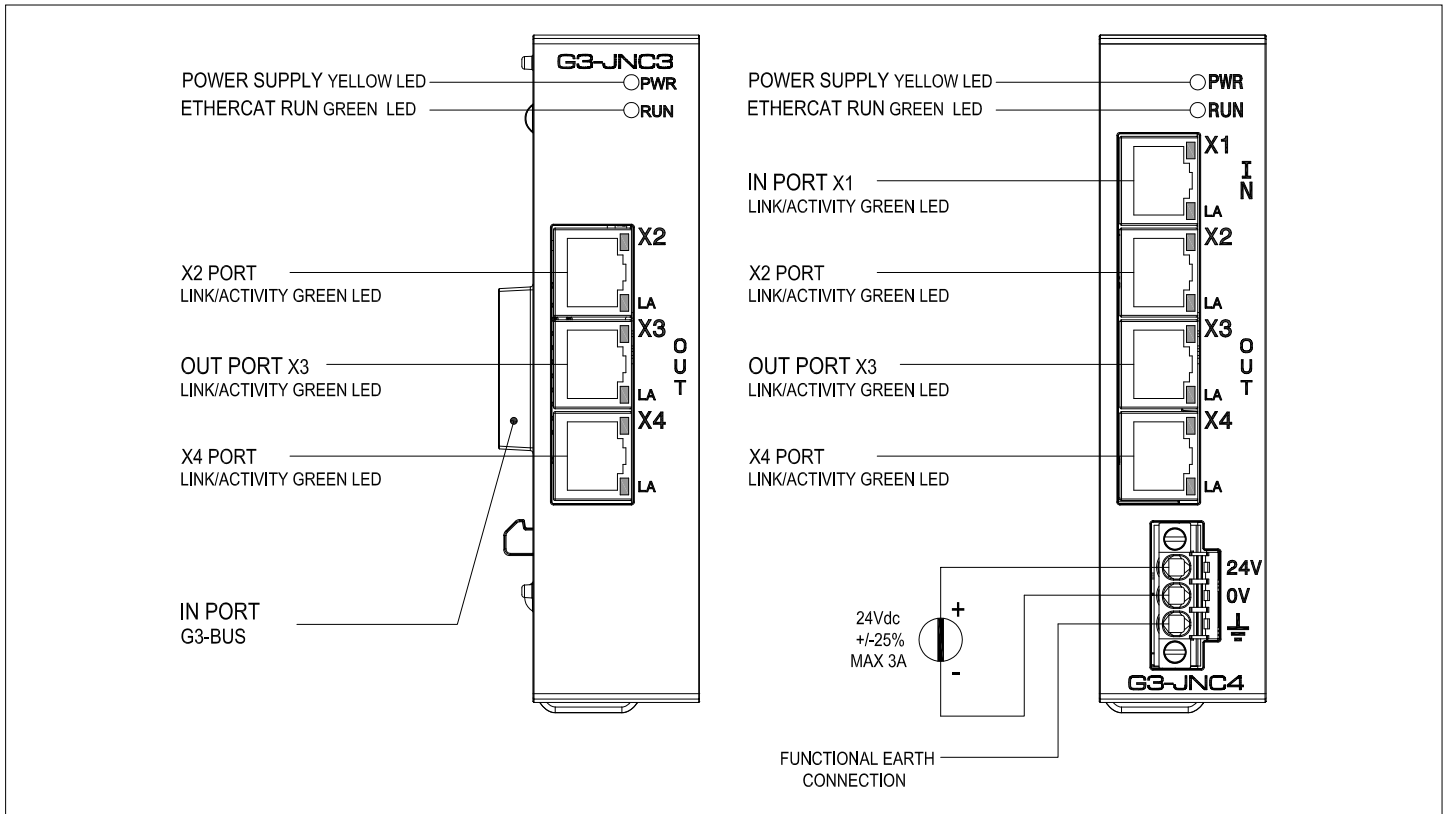
MECHANICAL DATA

Dimensions	120x110x30mm
Weight	150g
Protection level	IP20 For UL: not UL evaluated. Open type device
Attachment	mechanically snaps onto DIN rail
Connectors	RJ45 + 3 pole 5.08 pitch removable connector (G3-JNC4 only)

ENVIRONMENTAL CONDITIONS

Working temperature	-10...55°C
Storage temperature	-20...70°C
Humidity	max. 90% Rh not condensing
Pollution degree	2
Maximum altitude	2000 m

INSTALLATION AND CONNECTIONS



ORDER CODE

MODULE	ORDER CODE
G3-JNC3	F099392
G3-JNC4	F095040

GEFRAN spa reserves the right to make aesthetic or functional changes at any time and without notice.



This device conforms to European Union Directive 2014/30/EU and 2014/35/EU as amended with reference to generic standards: **EN 61000-6-2** (immunity in industrial environment) **EN 61000-6-4** (emission in industrial environment) - **EN 61010-1** (safety regulations).



cULus listed, Conformity UL61010-1 - File: E198546