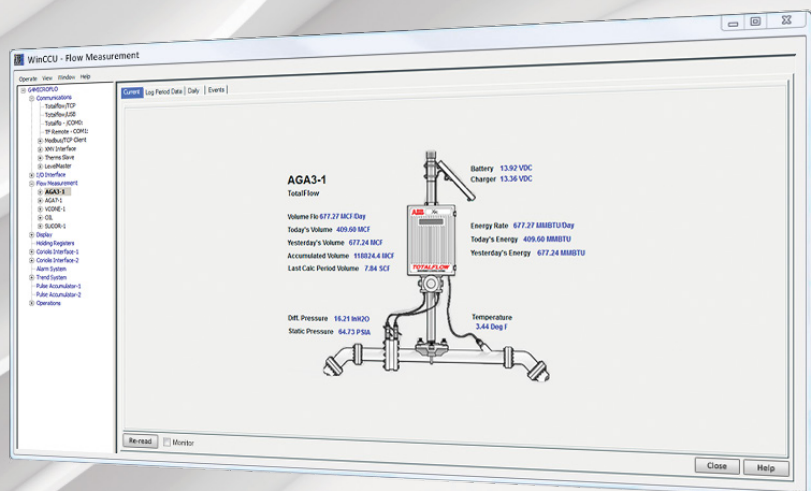


ABB MEASUREMENT & ANALYTICS | DATA SHEET

WinCCU

System software products

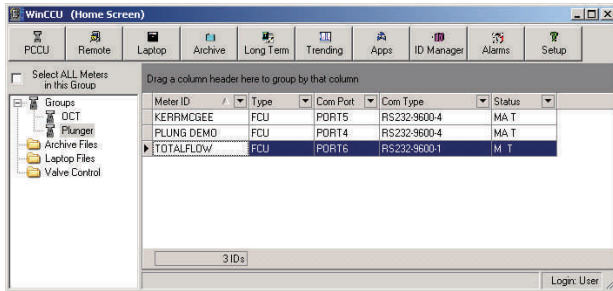


Description

The WinCCU software provides remote communication, remote configuration and data management including an audit trail for Totalflow systems. Collected data is stored in binary form in the Archive File. Archive data is converted to a long-term database for editing. All I/O is through the WinCPC Port Manager. WinCCU supports Access and Microsoft SQL Server 2000.

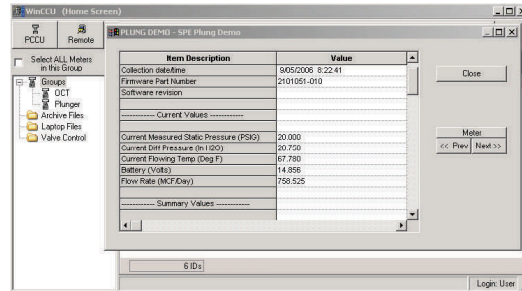
Features

WinCCU is very versatile interface to Totalflow devices. WinCCU provides a full range of functions:



Read and Write Totalflow Data

- Poll for Current Information
- Collect Historical Audit Trail Data
- Setup Trends
- Read Trend Data



Configuration Setup Data

Register Arrays

BTU Analyzer Analysis Data

Bulk read and write Analysis Data

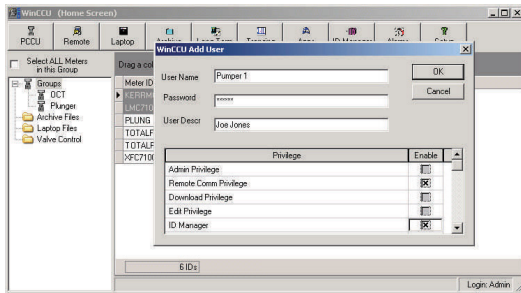
Valve Control

- Setup and Monitor
- Change Set Points
- Bulk Read and Write Nomination Data
- Deliverability Test Setup and Monitor

Host Console – Configurable User Interface for Non-standard Applications

Handheld and Laptop Collection Files

Define Device Templates



Network

Designed for Network Environment
Modular Organization Allows Moving from a Stand-Alone PC
to Corporate-Wide Networks and Over the Internet

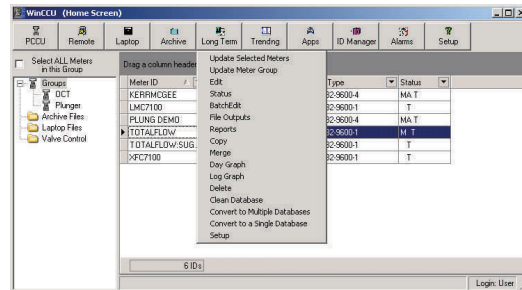
Security

Setup User Login Name and Password
Grant Access Rights

Archive and Long Term Database Utilities

View Data
Import and Export Data
Copy, Extract, Verify
Merge
Reports

- Daily, Hourly / Log Period
- Characteristic
- Events
- Summary
- Total Volume – Group of Devices



Field Balance – Inputs and Outputs

Alarms

Calibration

Missing Data

Report Outputs

Printer

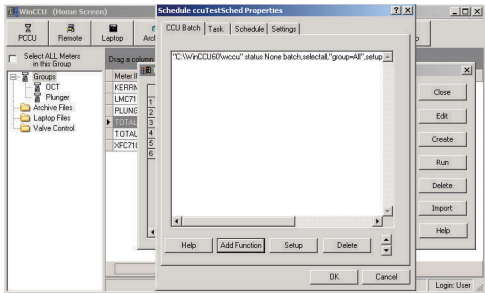
File

E-mail

Specify Date Range

Preview

Graph Hourly and Daily Data

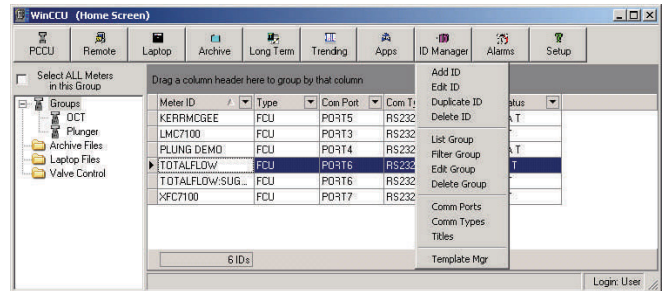


Scheduler – Periodic Sequential Execution of Totalflow and other Tasks

- Remote Communications
- Archive and Long Term Utilities
- Valve Control
- Trend and BTU Collection
- Executables, OLE Automation
- Programmed Delays – Triggers, DDE Events
- Set Start Time, Frequency, Interval

Meter ID Manager

- Define Devices for Read / Write Grouping
- Collection, Polling, Reports, or Scheduling
- User Defined Grouping Criteria

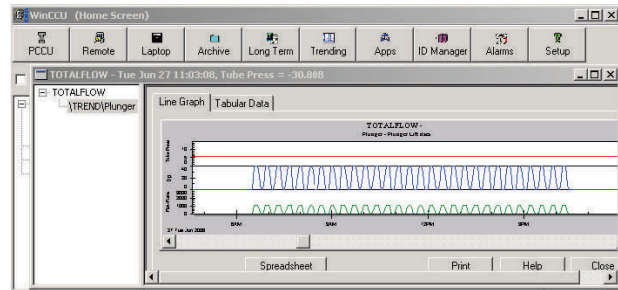


Setup Communication Ports

Define Communication Types

- Device Type
- Baud Rate, Link Establishment Time
- Delays and Protocol Parameters

Trending

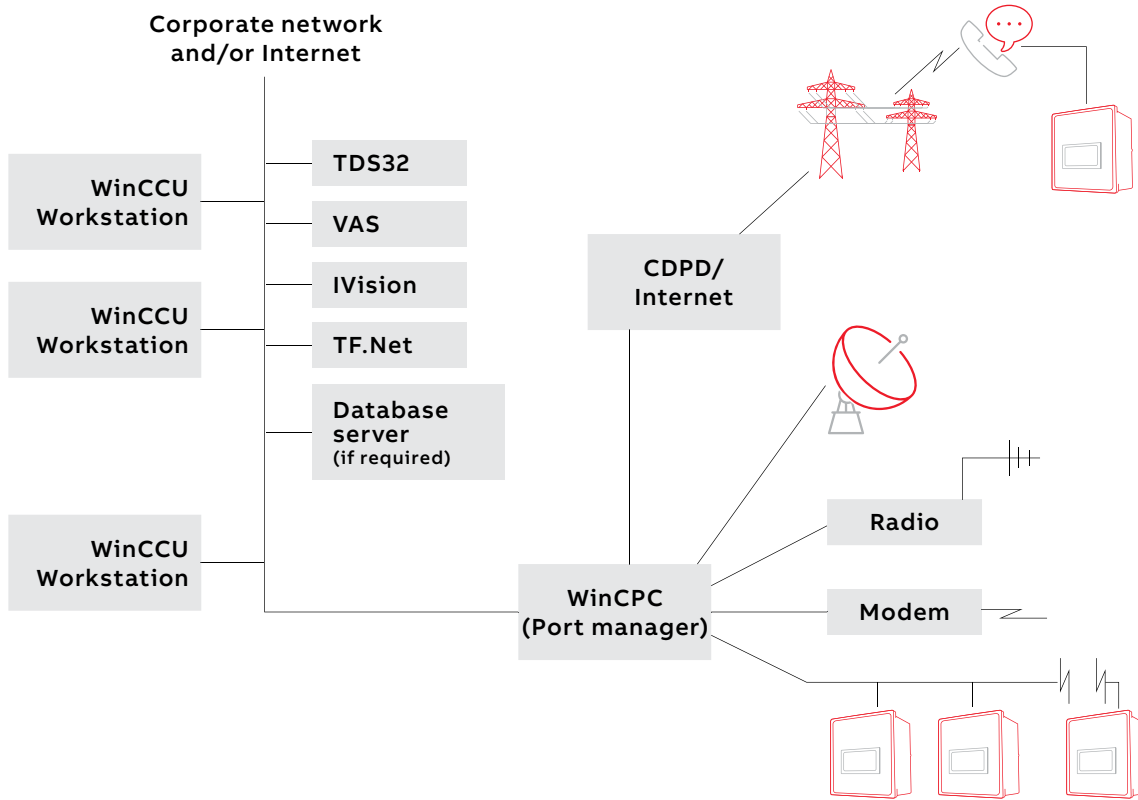


Benefits

- WinCCU Provides for Efficient and Effective management of Totalflow devices and Data. This package has extensive (decades) field-testing and has been enhanced to meet user needs and to support new Totalflow devices and features.
- The WinCCU audit trail insures data integrity for users and their clients. This increases confidence in billing accuracy.
- Device monitoring means that the Production Technicians can focus on immediate problems and not waste time visiting sites that do not need attention.
- Placing historical Data into a standard database means that it can be available to any authorized user in the company – Marketing, Engineering, Accounting, etc.
- Can be combined with other Totalflow Software for additional functionality
 - PCCU – Low level device setup
 - TDS32 – OPC / DDE / Wonderware Suite
Link driver for SCADA Systems and other packages such as Excel or Visual Basic
 - VAS – Voice call-out and call-in for alarms and current device information
 - SCADA Vantage Systems
 - TF.NET – Web Browser Interface to WinCCU, SCADA, and data stored in any standard Database
 - All on one PC, or distributed across a network as desired.

Comparison of WinCCU versions

	WinCCU Basic	WinCCU Basic with Trend	WinCCU Enterprise
Remote data collection and device configuration	✓	✓	✓
Scheduled data retrieval	✓	✓	✓
Audit trail & reporting	✓	✓	✓
Flow data editor	✓	✓	✓
Export data for 3rd party systems	✓	✓	✓
Trend data groups management and viewing		✓	✓
Import 3rd party EFM data			✓



Notes



ABB Inc.

Measurement & Analytics

Quotes: totalflow.inquiry@us.abb.com
Orders: totalflow.order@us.abb.com
Training: totalflow.training@us.abb.com
Support: totalflowsupport@us.abb.com
+1 800 442 3097 (opt. 2)

Main Office

7051 Industrial Boulevard
Bartlesville, OK 74006
Ph: +1 918 338 4888

www.abb.com/upstream

Kansas Office

2705 Centennial Boulevard
Liberal, KS 67901
Ph: +1 620 626 4350

Texas Office – Odessa

8007 East Business 20
Odessa, TX 79765
Ph: +1 432 272 1173

Texas Office – Houston

3700 West Sam Houston
Parkway South, Suite 600
Houston, TX 77042
Ph: +1 713 587 8000

Texas Office – Pleasanton

150 Eagle Ford Road
Pleasanton, TX 78064
Ph: +1 830 569 8062

We reserve the right to make technical changes or modify the contents of this document without prior notice. With regard to purchase orders, the agreed particulars shall prevail. ABB does not accept any responsibility whatsoever for potential errors or possible lack of information in this document.

We reserve all rights in this document and in the subject matter and illustrations contained therein. Any reproduction, disclosure to third parties or utilization of its contents – in whole or in parts – is forbidden without prior written consent of ABB.

© Copyright 2019 ABB.
All rights reserved.